

# Rushmore: Drilling Performance Review

The Industry Standard in Peer to Peer performance data sharing.

For 30 years, Operators have been sharing well data through Rushmore's Drilling Performance Review (DPR). They use this data to better plan and budget their well operations as well as drive and measure performance improvement. Rushmore provide strict parameters and definitions for each data point ensuring you are making decisions based on standardized high-quality data provided directly from the Operators.

## Join the DPR today to:

- Find data from more than 200 Operators from over 80,000 wells in over 100 countries
- Access industry data and competitor intelligence
- Obtain highly useful technical, time and cost data
- Decide what data to share, the rules for sharing, yearly changes needed and how additional value can be gained
- Visualise industry performance with Rushmore's dashboard interface and charting suite
- Access the REDD (Rushmore Estimated Drilling Days) and RDI (Rushmore Drilling Index) planning and benchmarking tools.
- Ingest data directly into Business Analysis tools through Rushmore's API

## Benefits of participating in the DPR

- **Establish your competitive performance** - It is nice to know you are doing better than last year, but the real bottom-line measure is how you are performing in relation to your competitors.
- **Provide a driver for improvement** - If you can show that others are doing it faster or less expensively, you can use this fact to accelerate improvement.
- **Target the big gaps** - Most Operators are good at some types of wells, or in some areas, but not so good in others. Use this information to make sure you target the biggest potential gains.

- **Plan and budget for wells in new areas** - You can access technical, time and cost data on tens of thousands of land, offshore and deepwater wells from over 100 countries. Use this data to evaluate the viability of future prospects.
- **Design and plan wells** - Engineers can study offset well data during the well design phase to consider how Operators of nearby wells react to the challenges in terms of wellbore size, trajectory, other design aspects, casing schemes, mud selection etc.
- **Compare ROP rates** - Plot offset well time-depth charts using the tables of time-depth data provided by Rushmore participants, to see how planned ROP rates compare with others and ensure that the most appropriate targets are set.
- **Evaluate progress** - Add an external viewpoint to your performance, report on your achievement of internal targets and integrate benchmark results into your standard measurement process.
- **Benchmark internally within a multinational company** - Participate in the studies on a global basis and use them for benchmarking between your own companies. Many multinational firms have used their participation to drive standardization of metrics across their corporation and to help improve data quality and internal reporting.

## Testimonial

"Equinor is using Rushmore Reviews primarily for external benchmarking to ensure our drilling and well performance remains among the best in class. The Reviews are useful to benchmark and quality check our time and cost estimates for planned wells, in particular for regions where little or no internal data exist. The reporting side of Rushmore Reviews is a great way to QC our internal data."

**Svein Kåre Dahle, Engineer D&W Operations, Equinor ASA, Norway**

## DPR Deliverables

The Drilling Performance Review contains approximately 120 total data fields, performance metrics for any set of wells and a host of charting options. Participants also gain access to tools such as the Rushmore Estimated Drilling Days (REDD) and the Rushmore Drilling Index (RDI). Some examples of what we provide include:

- Well identification
- Drilling technical details and methods
- Drilling fluid and coring / logging
- Hole size, Mud and Casings
- Time durations including NPT
- NPT codes
- Costs
- Time – depth chart
- Linked data definitions for each data element
- And, the ability to add planned wells against published wells to chart



Sample Dashboard available in Drilling Performance Review

## CONTACT US

### The Americas

+1-877-863-1306

### EMEA

+44-20-7176-1234

### Asia-Pacific

+852-2533-3565

Copyright © 2022 by S&P Global Commodity Insights, a division of S&P Global Inc. All rights reserved. No content, including by framing or similar means, may be reproduced or distributed without the prior written permission of S&P Global Commodity Insights or its affiliates. The content is provided on an “as is” basis.

[spglobal.com/commodityinsights](https://spglobal.com/commodityinsights)

137775387\_0322\_VL

# Rushmore: Completions Performance Review

The Industry Standard in Peer to Peer performance data sharing.

Operators have been sharing well data through Rushmore's Completion Performance Review (CPR) for over 25 years. They use this data to better plan and budget their well operations as well as drive and measure performance improvement. Rushmore provide strict parameters and definitions for each data point ensuring you are making decisions based on standardized high-quality data provided directly from the Operators.

## Benefits of participating in the CPR

- Access data from more than 100 operators for over 22,000 well completions in over 60 countries  
Find industry data and competitor intelligence
- Obtain highly useful technical, time and cost data
- Access to a detailed schematic diagram for every completion
- Decide which data to share, the rules for sharing, yearly changes needed and how additional value can be gained
- Visualise industry performance with Rushmore's dashboard interface and charting suite
- Ingest data directly into Business Analysis tools through Rushmore's API

## Join the CPR today to:

- **Establish your competitive performance:** Compare your performance amongst key peer groups in time, cost and applied technology
- **Provide a driver for improvement:** Learn from faster or more cost effective Operators, use this data to accelerate improvement
- **Design and plan wells:** Engineers can study offset well data and schematics during the well design phase to consider how Operators of nearby wells react to the challenges in terms of completion equipment choices and configuration (sand control techniques and hardware, tubing, production casing, artificial lift, zonal isolation equipment etc.)
- **Plan and budget for wells in new areas:** Access technical, time and cost data on thousands of land, offshore (platform and subsea) wells from over 60 countries. Use this data to evaluate the viability of future prospects

## Testimonial

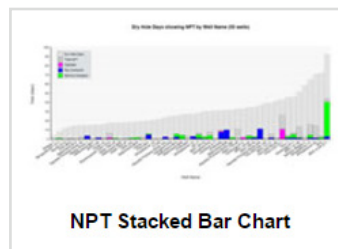
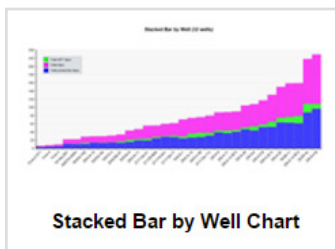
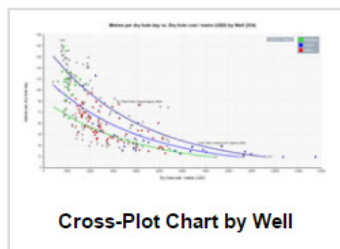
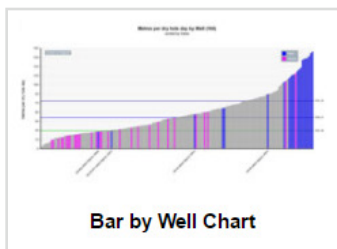
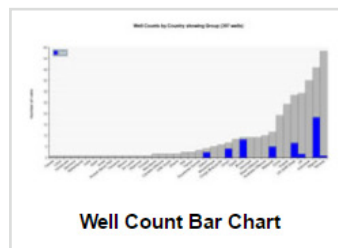
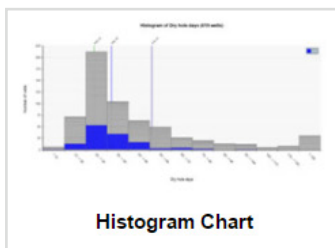
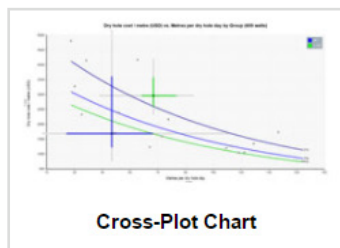
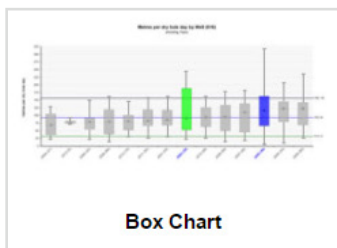
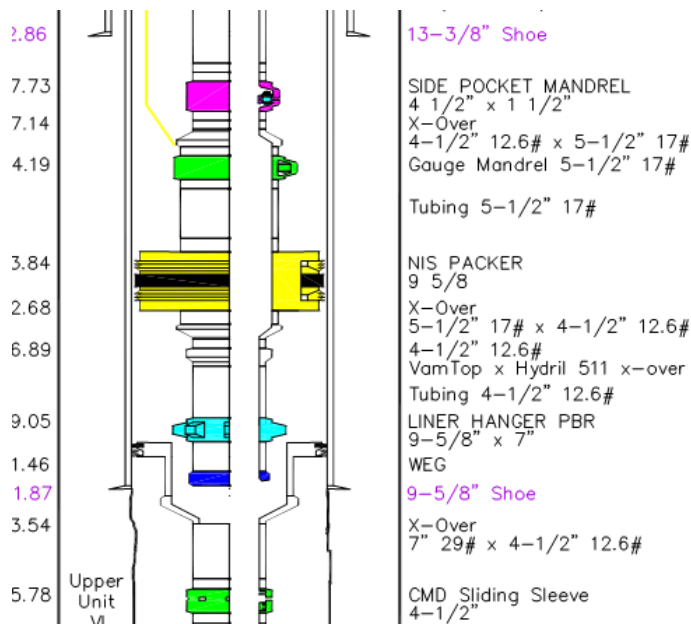
"Chevron uses Rushmore Reviews to benchmark our performance in both drilling and completions, and furthermore to measure shale field performance and subsea BOP reliability. The Rushmore data is key for gauging our performance internally and against competitors to ensure we are always competitive. We have been very successful in using the Reviews to reduce the uncertainty in new country entry cost estimating and well planning, making new ventures more profitable."

**Matt Albers, UC D&C Engineer, Chevron, USA**

## CPR Deliverables

The Completions Performance Review contains approximately 140 total data fields, performance metrics for any set of wells, a host of charting options and a detailed schematic diagram for every completion. Some examples of what we provide include:

- Well details: name, location, type, general description and wellbore characteristics (deviation, expected max pressure, temp. H<sub>2</sub>S, Co<sub>2</sub>)
- Lower completion technical details (sand control and zonal isolation equipment, production casing)
- Upper completion technical details (including artificial lift type, tubing size, material, length, XT type etc.)
- Workover details and remedial work
- Operations time details: phase durations (including NPT and WoW), main causes of NPT, rig and equipment type used (e.g. derrick, wireline, coiled tubing etc.)
- Perforating and stimulation operation details (conveyance method, number of runs, type of stimulation)
- Costs of completion operations



## CONTACT US

### The Americas

+1-877-863-1306

### EMEA

+44-20-7176-1234

### Asia-Pacific

+852-2533-3565

Copyright © 2022 by S&P Global Commodity Insights, a division of S&P Global Inc. All rights reserved. No content, including by framing or similar means, may be reproduced or distributed without the prior written permission of S&P Global Commodity Insights or its affiliates. The content is provided on an "as is" basis.

[spglobal.com/commodityinsights](https://spglobal.com/commodityinsights)

157972223\_0322\_VL

# Rushmore: Abandonment Performance Review

The Industry Standard in Peer to Peer performance data sharing.

Since 2008, Operators have been sharing data from their permanent well abandonments through the Rushmore Abandonment Performance Review (APR). Rushmore members use this global dataset to gain crucial insight into decommissioning best practices, enabling them to target significant time and cost savings in their abandonment campaigns.

## Join the APR today to:

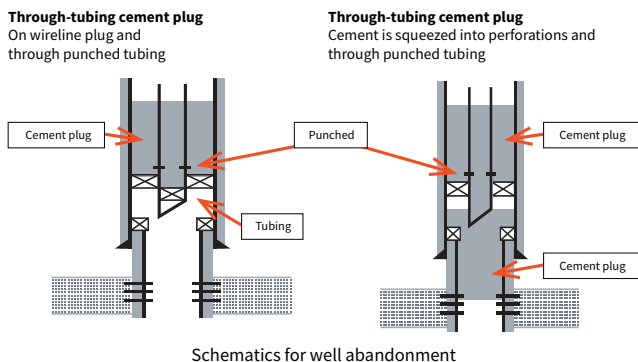
- Obtain data on over 800 well abandonments from across the globe
- Obtain highly useful technical, time and cost data
- Access a detailed before and after schematic diagram for every well abandonment
- Decide which data to share, the rules for sharing, yearly changes needed and how additional value can be gained
- Visualise industry performance with Rushmore's dashboard interface and charting suite
- Injest Rushmore APR data directly into Business Intelligence tools through our API

## Why should Operators participate?

Designed as an Operators-only community-based platform, The APR enables transparent and detailed peer-to-peer performance improvement with standardized data sharing, data-driven analytics and identification of risks or non-productive time (NPT).

Furthermore, the APR helps Operators to understand:

- What savings are typically achieved in abandonment campaigns
- Who to work with to share best practices
- Which technology trials are appropriate
- What other Operators have learned
- Update Asset Retirement Obligations (ARO's) based on completed well abandonment campaigns



## What our clients are saying

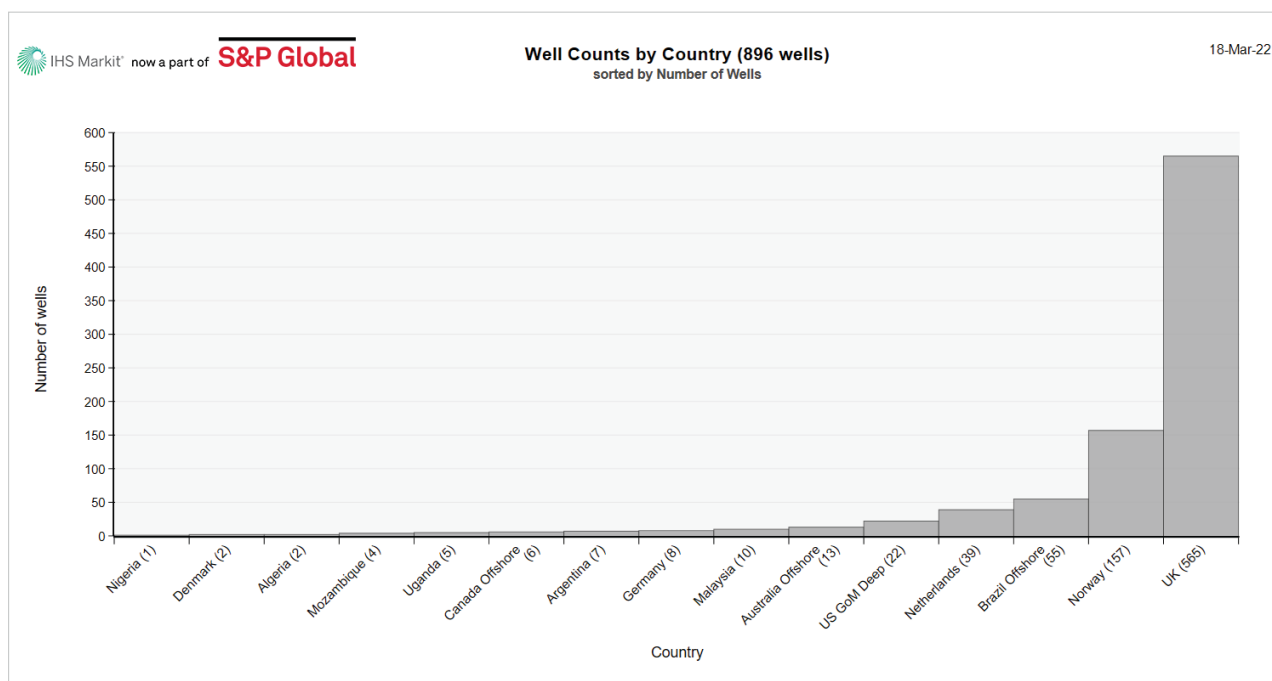
“Equinor is using Rushmore Reviews primarily for external benchmarking to ensure our drilling and well performance remains among the best in class. The Reviews are useful to benchmark and quality check our time and cost estimates for planned wells, in particular for regions where little or no internal data exist. The reporting side of Rushmore Reviews is a great way to QC our internal data.”

**Svein Kåre Dahle, Engineer D&W Operations, Equinor ASA, Norway**

Having become established in the North Sea as the Industry Standard platform for peer to peer data sharing on abandonment operations, the APR has in recent years grown as a global service with data from Africa, Australia, Brazil, Malaysia and the Gulf of Mexico. Operators abandoning wells in regions that are just beginning to enter the end of the well life cycle can learn best practices from the more mature North Sea, using real data provide directly from Operators to budget effectively and plan best in class campaigns.

## APR Deliverables

- Well details: name, location, technical descriptions
- Fluids, H2S, CO2, LSA, HPHT, Wellhead type, etc.
- Work done: cutting, milling, retrieval, barriers set
- Time durations: rig and rigless operations, NPT, WOW
- Costs
- 'Before' and 'after' schematic diagrams
- Description of well prior to abandonment
- Description of work scope
- Details & timings per phase
- Total, NPT, and WOW times
- Total and phased costs
- Complexity



## CONTACT US

### The Americas

+1-877-863-1306

### EMEA

+44-20-7176-1234

### Asia-Pacific

+852-2533-3565

Copyright © 2022 by S&P Global Commodity Insights, a division of S&P Global Inc. All rights reserved. No content, including by framing or similar means, may be reproduced or distributed without the prior written permission of S&P Global Market Intelligence or its affiliates. The content is provided on an "as is" basis.

[spglobal.com/commodityinsights](https://spglobal.com/commodityinsights)

858736621\_0322\_SY

# Rushmore: Shale Performance Review

The Industry Standard in Peer to Peer performance data sharing.

Rushmore's Shale Performance Review (SPR), is a global data set covering drilling, completions, and hydraulic fracturing, containing the key technical, time and cost data to encompass all multistage frac'ing of horizontal wells.

## Join the SPR today to:

- Access data from over 17,000 wells in 8 countries
- Get industry data and competitor intelligence
- Obtain highly useful technical, time and cost data
- Decide which data to share, the rules for sharing, yearly changes needed and how additional value can be gained
- Visualise industry performance with Rushmore's newly launched dashboard interface and charting suite
- Digest Rushmore APR data directly into Business Intelligence tools through our API

## Benefits of participating in the SPR

- **Establish your competitive performance** - It is nice to know you are doing better than last year, but the real bottom-line measure is how you are performing in relation to your competitors.
- **Provide a driver for improvement** - If you can show that others are doing it faster or less expensively, you can use this fact to accelerate improvement.

- **Discover what the best-in-class operators do differently** - While the data will not tell you precisely how they deliver superior performance, it will provide clues and indicators that you can build upon.
- **Plan and budget for wells in new areas** - Access technical, time and cost data for more than 17,000 multi-stage fractured wells in 8 countries. Use this data to evaluate the viability of future prospects.
- **Production data add-on** - Oil, Water and Gas production data is now available for both U.S. Land Lower 48 and Canada Land wells. This additional service allows participants to analyze the effectiveness of frac'ing techniques in relation to production.

## Testimonial

"Chevron uses Rushmore Reviews to benchmark our performance in both drilling and completions, and furthermore to measure shale field performance and subsea BOP reliability. The Rushmore data is key for gauging our performance internally and against competitors to ensure we are always competitive. We have been very successful in using the Reviews to reduce the uncertainty in new country entry cost estimating and well planning, making new ventures more profitable."

**Matt Albers, UC D&C Engineer, Chevron, USA**

## SPR Deliverables

The Shale Performance Review contains approximately 100 total data fields, performance metrics for any set of wells and a host of charting options. Some examples of what we provide include:

- Well identification, location and formation detail
- Total footage drilled, measured total depth, lateral length and kick-off point
- Hole size, mud type and casing details
- Rig section times and drilling method
- Frac'ing method, number of stages, treated length and time on pad
- Proppant, fluid and treating pressure details
- Drilling and completion/frac'ing costs and NPT

Performance Metrics									
Metric	P5	P10	Q1 P25	Q2 P50	Q3 P75	P90	Min	Mean	Max
Drilling Cost / Day (k USD)	125	132	152	178	200	206	119	177	206
Drilling Cost / metre (USD)	386	398	429	503	712	770	373	578	778
MTD (m)	2,063	3,000	4,890	5,231	5,950	6,320	1,126	4,850	6,547
TVD (m)	1,168	1,732	2,885	2,993	3,171	3,244	605	2,656	3,269
Number of Sections	2	2	2	3	3	4	2	3	4
Length of Lateral Section (m)	921	1,095	1,527	2,160	2,880	3,063	748	2,106	3,132
Completions and Frac'ing Metrics									
Completion NPT Days	0.0	0.0	0.1	0.2	0.4	3.2	0.0	1.1	5.0
Completion Cost (m USD)	0.89	1.43	3.04	3.98	3.98	4.75	0.36	3.32	5.26
Frac'ing Stages	5	7	14	18	31	33	3	20	35
Frac'ing Treated Length (m)	489	719	1,410	1,861	2,396	2,710	259	1,769	2,920
Frac'ing Treating Rate (bpm)	25	28	37	76	79	83	22	60	86
Frac'ing Treated Pressure (psi)	2,283	3,006	5,178	8,503	8,717	8,963	1,559	6,617	9,127
Frac'ing Volume Pumped (k bbls)	18	31	72	115	187	483	4	212	680
Vol. Clean Fluid Pumped (bbls) / Stage	1,543	1,736	2,316	6,389	13,383	17,017	1,350	10,481	19,440
Proppant Placed (k lbs) / Stage	106	110	125	322	531	609	101	402	662
Proppant / Gross Treated Length (lbs / m)	1,198	1,231	1,329	3,114	5,268	7,910	1,166	4,587	9,672
Cost / Gross Treated Length (USD / m)	1,368	1,372	1,386	2,139	2,155	2,180	1,363	1,879	2,196
Cost (k USD) / Stage	121	123	128	150	217	219	120	165	221
Stages Frac'ed / Day Frac Crew Present	3.0	3.2	3.7	4.8	6.9	9.4	2.9	4.9	11.1
Frac'ing Days	0.88	1.22	2.23	3.83	5.85	7.62	0.54	4.25	8.79
Average Stage Length (m)	72	76	86	94	101	102	68	88	103

Help
Print
Download to Excel

Sample Metrics Table available in Shale Performance Review

### CONTACT US

#### The Americas

+1-877-863-1306

#### EMEA

+44-20-7176-1234

#### Asia-Pacific

+852-2533-3565

Copyright © 2022 by S&P Global Commodity Insights, a division of S&P Global Inc. All rights reserved. No content, including by framing or similar means, may be reproduced or distributed without the prior written permission of S&P Global Commodity Insights or its affiliates. The content is provided on an "as is" basis.

[spglobal.com/commodityinsights](https://spglobal.com/commodityinsights)

858735805\_0322\_SY