

Carbon Capture, Utilization, and Storage



What it is

Carbon Capture Utilization and Storage (CCUS) is a key pathway to Net Zero and our Industry solution draws on our 60 years of experience in the Upstream, Midstream and Downstream Exploration, and Production markets to address the industry challenges.

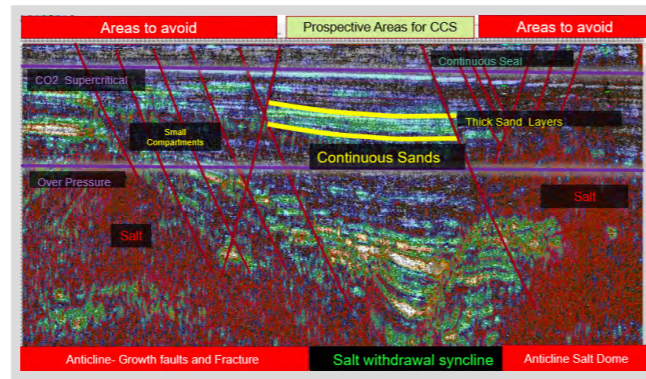
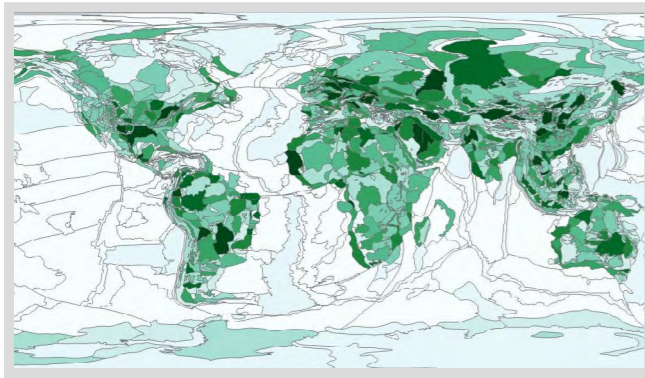
Change at Pace

The CCUS Industry is evolving at an ever-increasing pace as we get closer to 2050 and the Net Zero objective. To reach Net Zero objectives, two new CCUS projects, the size of the Northern Lights CCUS project, need to become operational every week for the next 5 years according to reports from CERAWEEK (2024).

The CCUS Industry has upscaled, in terms of project numbers but needs to do more — at pace. At the end of 2022, the SPGCI CCUS Projects and Hubs Database contained 400 projects. At the beginning of 2024 it was tracking 943 projects.

What Challenges are Faced by the Industry?

The regulatory policy framework is continually evolving, at differing paces, globally. The industry needs to know what the changes are, their impact, and what policies are being adopted that will influence future regulation. Strategists, Project Managers and Business Developers also need to plan and identify cost impacts incurred in operating a CCUS facility.



Sub-surfacing modelling in the Gulf of Mexico

In screening and assessment of injection suitability through geophysical conditions below the surface are investigated by geoscientists and engineers. Factors to be considered include stratification and faulting, which may restrict lateral accessibility; subsurface composition that affects injection and capacity; net storage quality sands; surface access restrictions; mapping of CO₂ sources to storage sinks and transport infrastructure.

How does the SPG Commodity Insights Solution Address these Challenges?

Above or below the ground we provide the granular insights and data you need to assess the potential of a CCUS Project, assessing risk and enabling decision making based on intelligence facts.

- Policy and Regulatory Insights: Understand the emerging policies within an area of interest, and how the regulatory regime is changing.
- Quantify GHG Emissions and their source.
- Understand the societal impact when undertaking Planning and Feasibility studies.
- Screen the suitability of the subsurface investigating storage volume, drilling options, seismic activity, and geophysical characteristics with extensive and granular datasets.
- Effectively budget and build the business case by factoring in capture, transport, and storage costs based on the local market conditions and understand operational and capex expenditure.
- Evaluate the impact of differing carbon pricing scenarios.
- Monetize sequestered volumes and retired carbon credits.
- Measure, monitor, and verify injected CO₂ volumes are contained in the target reservoirs.
- Look to the future by examining liability and release scenarios.



Why SPGCI CCUS?

Data Scope

Datasets offering the granularity needed for informed decision making.

- Coverage of 118,000 facilities globally
- More than 4.2 million km of pipeline information
- Coverage of over 6M wells and 19k assets worldwide
- 50,000+ facilities & 4,500+ companies
- Historical well, production, drilling, completion data at asset, field, basin, or regional level
- Current rig, permit, drilling, and leasing activity

Speed of Analytical Capability

Our software uses AI Technology to analyze large volumes of complex data which is significantly quicker than traditional processes, saving time and money.

Accessibility

Accessible via Snowflake, Browser and API for flexibility, and convenience.

CCUS Cost Estimator accessible via Platts Connect.

For Further Information Please Contact

ci.support@spglobal.com

Website

[Carbon Capture Utilization and Storage \(CCUS\) | S&P Global \(spglobal.com\)](https://www.spglobal.com)

About S&P Global Commodity Insights

At S&P Global Commodity Insights, our complete view of global energy and commodities markets enables our customers to make decisions with conviction and create long-term, sustainable value.

We're a trusted connector that brings together thought leaders, market participants, governments, and regulators to co-create solutions that lead to progress. Vital to navigating Energy Transition, S&P Global Commodity Insights' coverage includes oil and gas, power, chemicals, metals, agriculture and shipping.

S&P Global Commodity Insights is a division of S&P Global (NYSE: SPGI). S&P Global is the world's foremost provider of credit ratings, benchmarks, analytics and workflow solutions in the global capital, commodity and automotive markets. With every one of our offerings, we help many of the world's leading organizations navigate the economic landscape so they can plan for tomorrow, today. For more information, visit www.spglobal.com/commodityinsights.

CONTACT US

ci.support@spglobal.com

North America

+1-800-PLATTS (toll-free)
+1-212-904-3070 (direct)

Latin America

+55-11-3371-5755

EMEA

+44-(0)20-7260-2000

Asia-Pacific

+65-6530-6430

Copyright © 2023 by S&P Global Inc. All rights reserved.

spglobal.com/commodityinsights