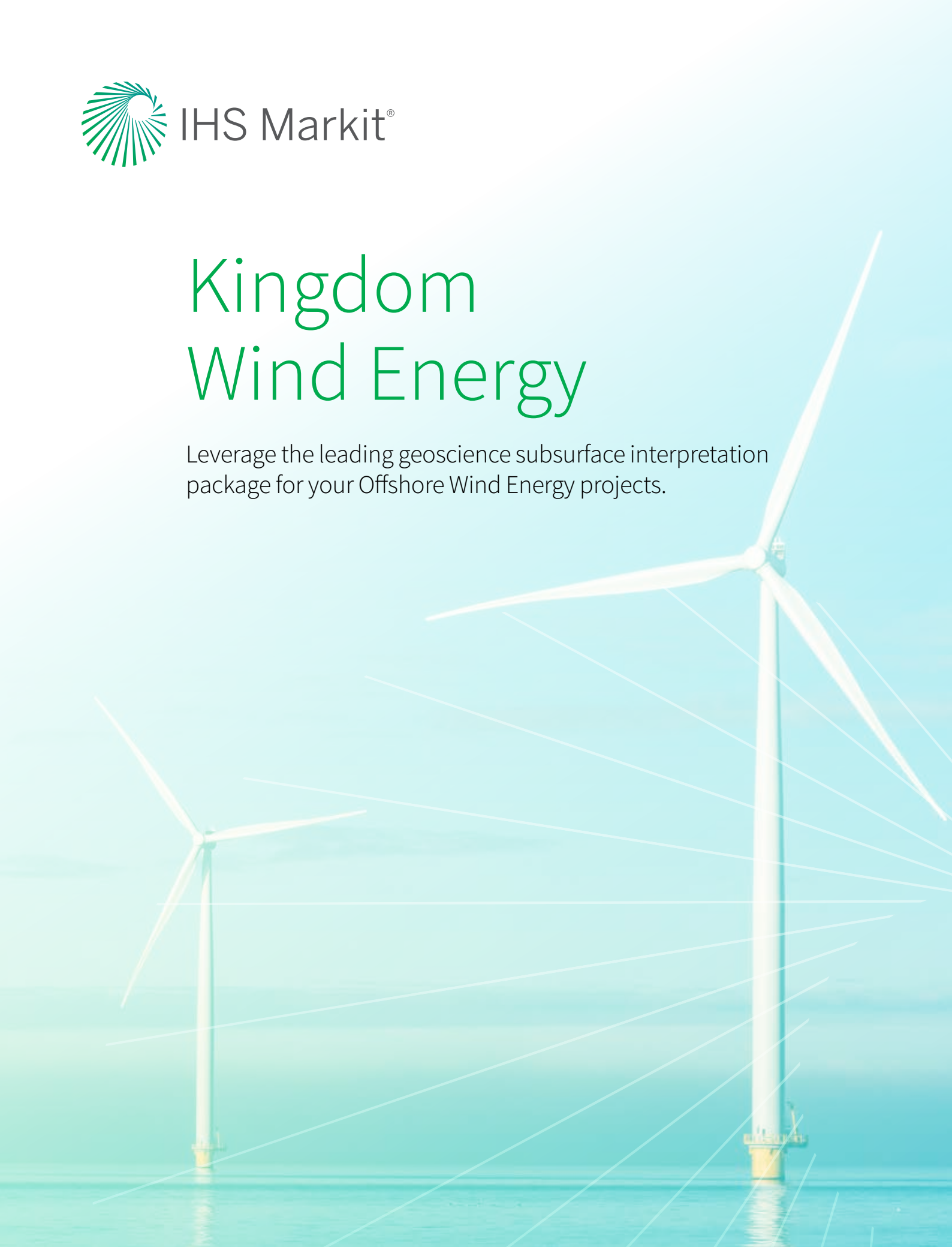




# Kingdom Wind Energy

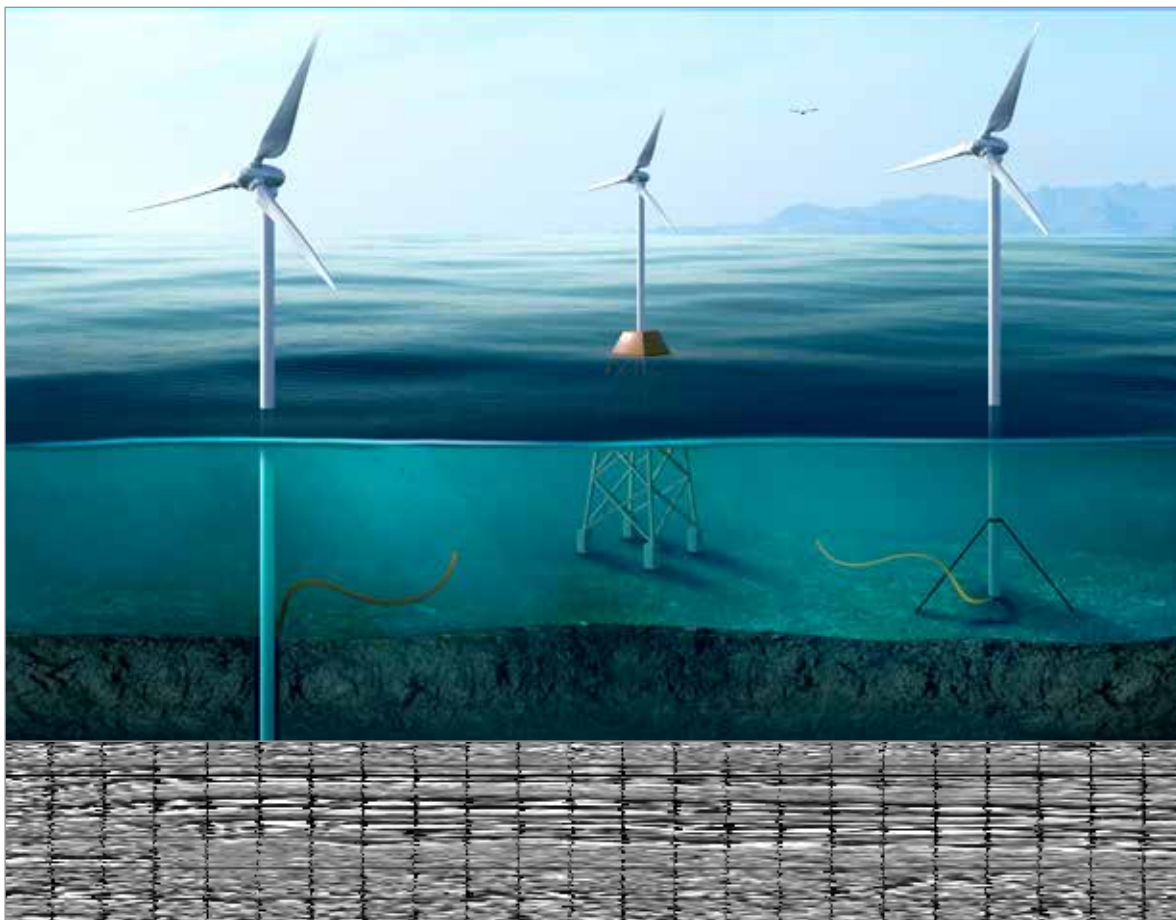
Leverage the leading geoscience subsurface interpretation package for your Offshore Wind Energy projects.



## Kingdom Wind Energy

IHS Markit is dedicated to providing solutions for the global energy market including the wind industry.

Kingdom by IHS Markit is the most widely trusted geoscience interpretation solution in the world. It is a platform with a robust set of tools able to integrate a wide range of data types, including, seismic, GIS and geotechnical data with easy to use workflows for a comprehensive analysis. Enhanced by leading edge technology and analytics that will enable detailed and complete site investigation of offshore wind farms.



## High Performance Seismic Interpretation

### Kingdom Geophysics

#### – Complete shallow hazard and sea floor anomaly analysis

- Easily manage large volumes of 2D and 3D seismic data
  - Sub bottom seismic data is easily loaded and interpreted in a user friendly tool
- Evaluate surface and subsurface anomalies with embedded seismic interpretation and attribute functionality
  - Enhance your analysis by integrating CPT and SPT logs with Seismic data

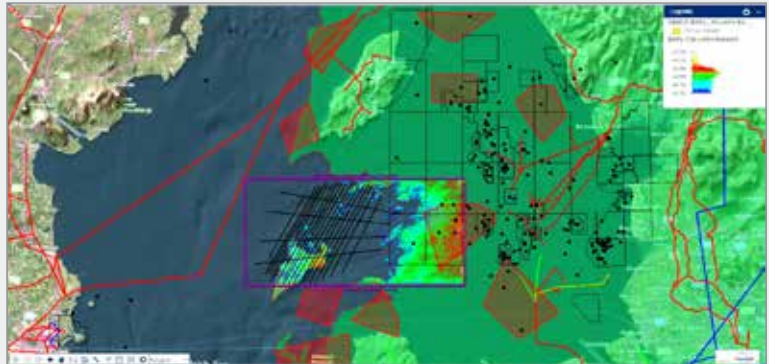
#### – Visualize the seabed, geological and geophysical features in 3D

#### – Users will experience increased performance, efficient data management, and reduced uncertainty

# Next Generation Mapping Tool with GIS

## Spatial Explorer

- **Integrated mapping solution**
  - Provides a layer-based map to combine Kingdom interpretation and GIS data into one single view
  - Advanced integration with ESRI increases efficiency
- **Easily combine geotechnical data from multiple data sources to enhance analysis (i.e. infrastructure, water depth, subsurface property maps, etc.)**
  - Use opacity controls to highlight hazards
  - Create a buffer layer around objects
  - Generate a shapefile that can be used by engineers



**Image:** Spatial Explorer map integrating data from multiple sources including – Web Map Services, IHSM OFS, IHSM Midstream, UXO data. Bathymetry grid provided by GEBCO.

GEBCO Compilation Group (2020) GEBCO 2020 Grid (doi:10.5285/a29c5465-b138-234d-e053-6c86abc040b9).

### Data Types Utilized

Bathymetry

Back scatter data

Single Channel 2D Geotechnical Seismic

Side Scan Sonar

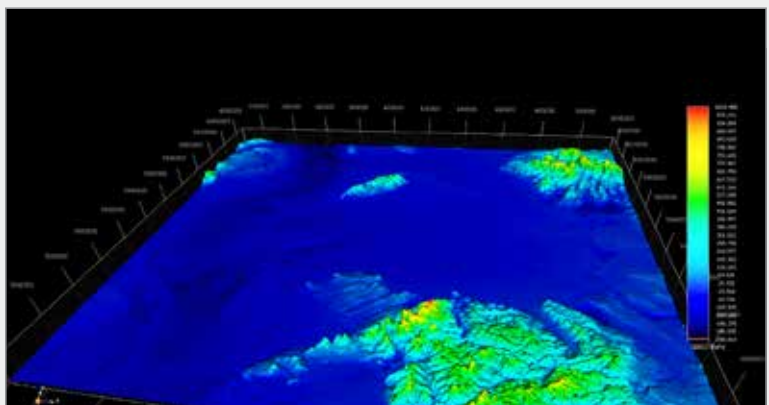
CPT and SPT logs

Vibrocores



## Unique Platform Capabilities

- **Advanced Attribute Generation and Co-blending**
  - Generating seismic attributes using a streamlined workflow
  - Display two seismic attributes on your basemap or seismic section simultaneously by interactively blending the two
- **State-of-the-Art Mapping Solution: Spatial Explorer**
  - Provides a layer-based map to combine Kingdom and GIS data into one single view
  - Advanced ESRI integration
  - Opacity controls and buffering
- **Data Management (SQL or Oracle)**
  - Only secure relational database solution that both data management professionals as well as interpreters can easily load and manage all data necessary
  - Manage multi-project environments with thousands of 2D and 3D seismic surveys



**Image:** 3D visualization of high-resolution bathymetry. Bathymetry grid provided by GEBCO.

GEBCO Compilation Group (2020) GEBCO 2020 Grid (doi:10.5285/a29c5465-b138-234d-e053-6c86abc040b9).

## About IHS Markit

IHS Markit (NYSE: INFO) is a world leader in critical information, analytics and expertise to forge solutions for the major industries and markets that drive economies worldwide. The company delivers next-generation information, analytics and solutions to customers in business, finance and government, improving their operational efficiency and providing deep insights that lead to well-informed, confident decisions. IHS Markit has more than 50,000 business and government customers, including 80 percent of the Fortune Global 500 and the world's leading financial institutions. Headquartered in London, IHS Markit is committed to sustainable, profitable growth.

### CUSTOMER CARE

#### NORTH AND SOUTH AMERICA

**T** +1 800 447 2273

+1 303 858 6187 (Outside US/Canada)

#### EUROPE, MIDDLE EAST AND AFRICA

**T** +44 1344 328 300

#### ASIA PACIFIC

**T** +604 291 3600

**E** [CustomerCare@ihsmarkit.com](mailto:CustomerCare@ihsmarkit.com)

[ihsmarkit.com](https://www.ihsmarkit.com)