

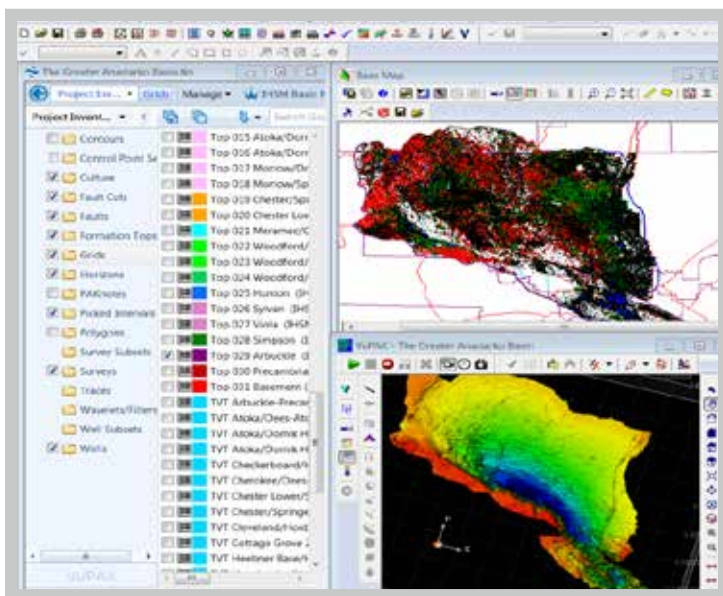
Greater Anadarko Basin Kingdom™ Project

The Greater Anadarko
Resource Study
Delivered in Kingdom™



The Greater Anadarko Basin Kingdom™ Geology Project encompasses the entire Anadarko Basin proper and the surrounding features; Keyes Dome, Cimarron Uplift, Amarillo Uplift, Ardmore & Marietta Basins and the Seminole Uplift in Texas, Oklahoma and Kansas, USA.

The project contains 3D geological models of 28 formations and 14 reservoir benches built entirely from S&P Global Interpreted Formation Tops data. The project contains cleaned Well data, Interpreted Tops, Digital Logs, digital Land Grid and Lat Longs, and raw Production data. It also contains various analytical data types, including Zones Attributes and Grid Files, plus a comprehensive play analyses comprising 4 Shale (Continuous Type), 12 Granite Wash (Continuous Type) and 25 Stratigraphic-Structural (Non- Continuous Type) Plays. All Producing Formations have been normalized using PRODFit, a new enhancement to the S&P Global Well database. The value proposition of the project is to provide a basic, ready- made geological platform and enhanced data for effective evaluation of any area of interest within the basin. Users can readily incorporate their proprietary and third-party data, saving hundreds of man hours normally required for data collation and mining.



The Greater Anadarko Basin Kingdom™ project as displayed in Kingdom™

**North America
Content Bundle
+ Digital Logs**

326,412

Total number of wells from well database

142,947

Wells with production volumes

139,819

Wells with S&P Global interpreted tops

256,721

Total number of wells with profit enhanced data

45,914

Wells with digital logs

41 GB

Total file size

12 GB

Kingdom™ project directory (shape files, grids, models etc.)

29 GB

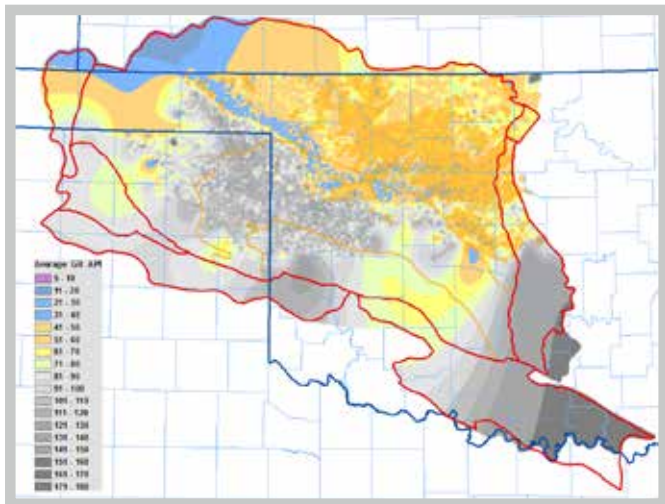
Kingdom™ project SQL database

Software Requirement

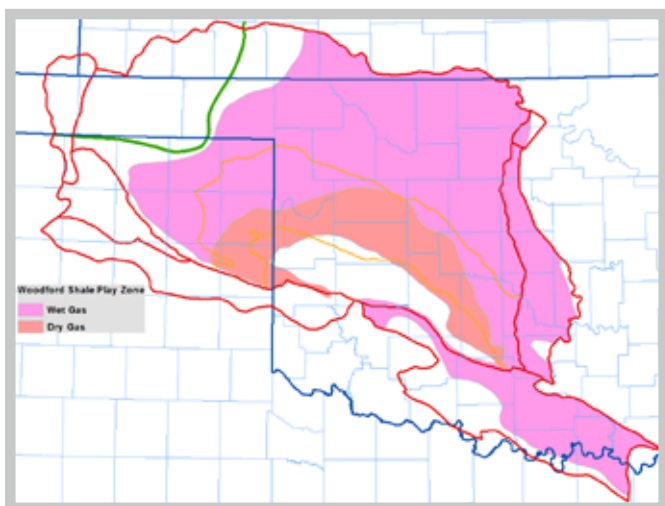
- Kingdom™ Geology package (VuPAK and EarthPAK modules)
- SQL Server

Projection System

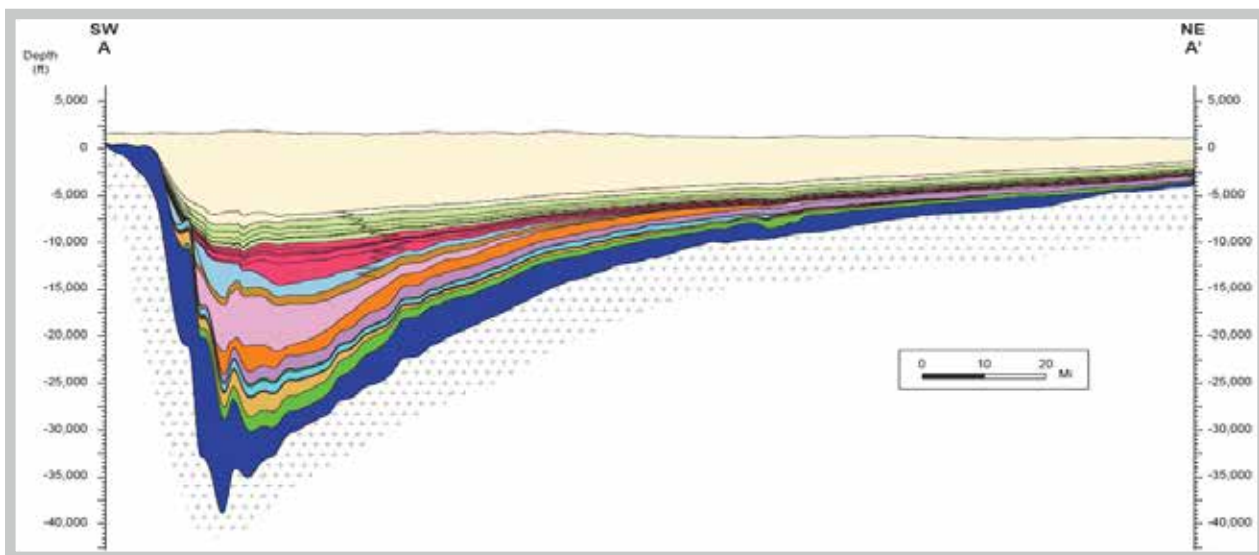
- NAD_1927_UTM_Zone_14N, Linear Unit: Foot_US



Oswego Example derived from The Greater Anadarko Basin Kingdom™ project: Wash and Stratigraphic-Structural Components



Woodford Shale Example derived from The Greater Anadarko Basin Kingdom™ project: Continuous Play



Greater Anadarko Basin Geologic Section using only S&P Global Interpreted Tops

Kingdom™ grid data

155
Total Kingdom™ grids

46
Top grid files

42
TVT grid files

39
GR_ arth mean

28
RO_oil_gravity_ derived

About S&P Global Commodity Insights

At S&P Global Commodity Insights, our complete view of global energy and commodities markets enables our customers to make decisions with conviction and create long-term, sustainable value.

We're a trusted connector that brings together thought leaders, market participants, governments, and regulators to co-create solutions that lead to progress. Vital to navigating Energy Transition, S&P Global Commodity Insights' coverage includes oil and gas, power, chemicals, metals, agriculture and shipping.

S&P Global Commodity Insights is a division of S&P Global (NYSE: SPGI). S&P Global is the world's foremost provider of credit ratings, benchmarks, analytics and workflow solutions in the global capital, commodity and automotive markets. With every one of our offerings, we help many of the world's leading organizations navigate the economic landscape so they can plan for tomorrow, today. For more information, visit www.spglobal.com/commodityinsights.

CONTACT US

The Americas

+1-877-863-1306

EMEA

+44-20-7176-1234

Asia-Pacific

+852-2533-3565

Copyright © 2022 by S&P Global Commodity Insights, a division of S&P Global Inc. All rights reserved. No content, including by framing or similar means, may be reproduced or distributed without the prior written permission of S&P Global Commodity Insights or its affiliates. The content is provided on an "as is" basis.

spglobal.com/commodityinsights