

Gulf Coast Kingdom™ Project

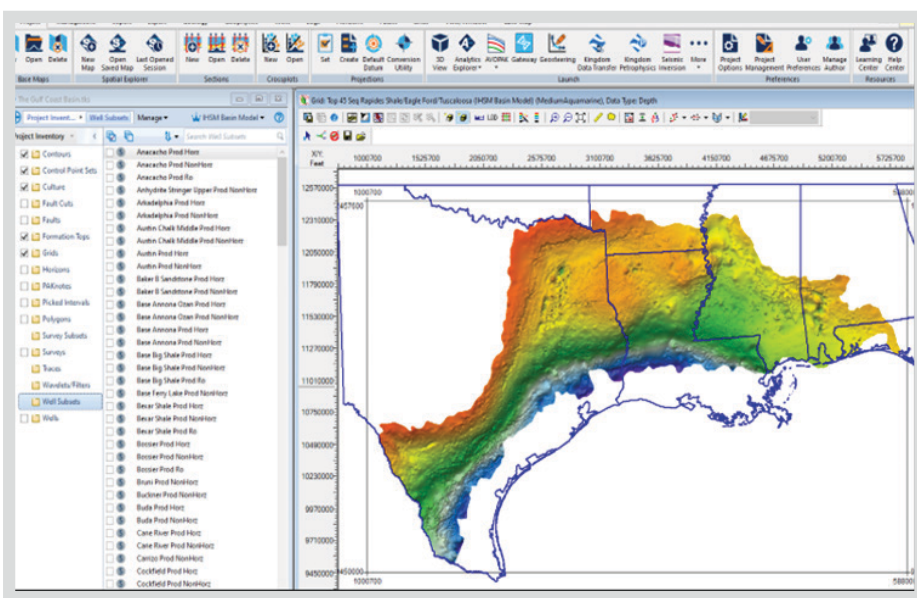
The Onshore Gulf
Coast Resource Study
Delivered in Kingdom™



S&P Global
Commodity Insights

The Gulf Coast Kingdom™ Project provides a powerful, ready-made geological reconnaissance tool, effective for evaluating any Formation quickly and accurately, for defining AOI's, developing Prospects, or analyzing an entire Play.

The boundary of the project follows classification and limit in the S&P Global basin database and include the onshore region of the basin except the near-shore transition zone where S&P Global does not have Interpreted Formation Tops coverage. The Gulf Coast Onshore Kingdom™ Project contains 3D geological model of 93 formations from the Basement to the Upper Oligocene all built from S&P Global interpreted tops. The project contains normalized Reference Elevation, cleaned Wells, Interpreted Tops, Digital Logs and Allocated Production raw data. S&P Global geoscientists have developed this project using primarily Kingdom™ software. This allows users to easily integrate proprietary and/or third-party data and save the thousands of man hours typically required for data mining, collation, QC analysis and Geomodelling.



The Gulf Coast Onshore Kingdom™ Project as displayed in Kingdom™

**North America
Content Bundle
+ Digital Logs**

512,733
Wells with
well data

300,795
Wells with
production data

157,716
Wells with
S&P Global
interpreted tops

28,945
Wells with
digital logs

20
Total land
grid shape files

Total
file size
146 GB

Kingdom™ project
directory (shape files,
grids, models etc.)
100 GB

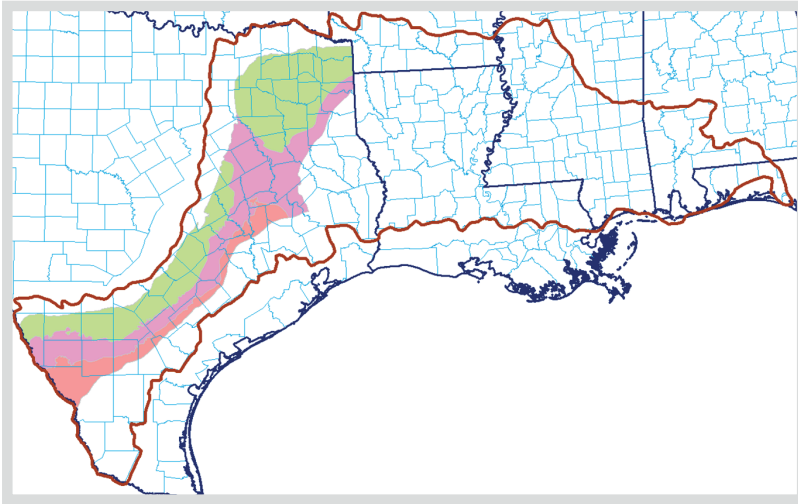
Kingdom™
project SQL
database
46 GB

Software Requirement

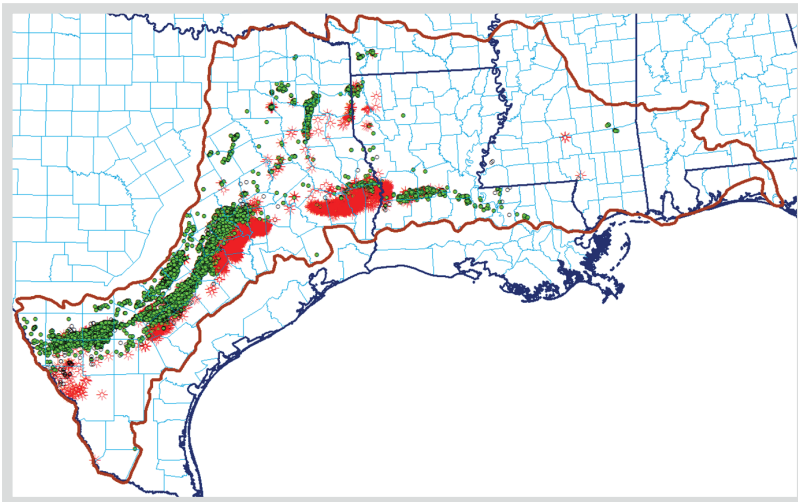
- Kingdom™ Geology package (VuPAK and EarthPAK modules)
- SQL Server

Projection System

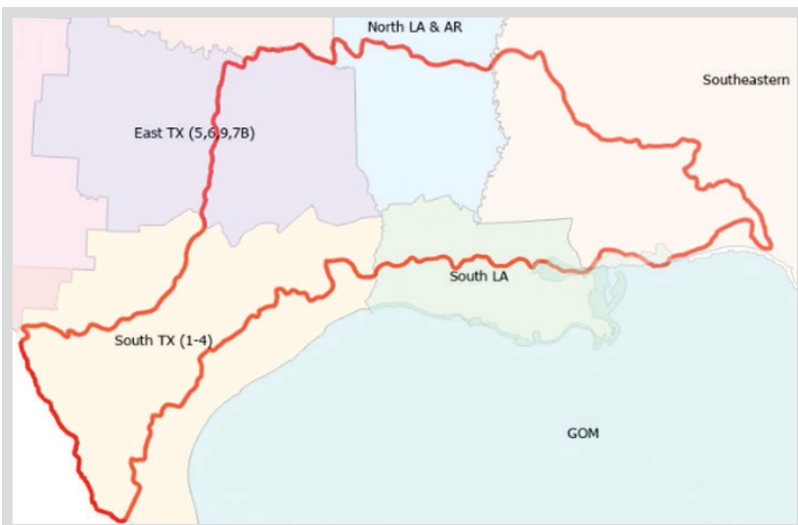
- NAD_1927_UTM_Zone_14N,
Linear Unit: Foot_US



Thermal maturity Play map example derived from The Gulf Coast Kingdom™
Project: Eagle Ford Shale



Strati-Structural (Non-Continuous) Play example derived from The Gulf Coast Kingdom™
Project: Austin Play



The Gulf Coast Kingdom™ Project: delivery options

Kingdom™

847

Total Kingdom™ grids

93

Number of formations mapped

163

Total well subsets

8

Total cultural shape files

89

Total play shape files

4 Delivery Options:

- Entire Project
- South TX
- East TX & North LA/AR
- South LA & Southeastern States

About S&P Global Commodity Insights

At S&P Global Commodity Insights, our complete view of global energy and commodities markets enables our customers to make decisions with conviction and create long-term, sustainable value.

We're a trusted connector that brings together thought leaders, market participants, governments, and regulators to co-create solutions that lead to progress. Vital to navigating Energy Transition, S&P Global Commodity Insights' coverage includes oil and gas, power, chemicals, metals, agriculture and shipping.

S&P Global Commodity Insights is a division of S&P Global (NYSE: SPGI). S&P Global is the world's foremost provider of credit ratings, benchmarks, analytics and workflow solutions in the global capital, commodity and automotive markets. With every one of our offerings, we help many of the world's leading organizations navigate the economic landscape so they can plan for tomorrow, today. For more information, visit www.spglobal.com/commodityinsights.

CONTACT US

The Americas

+1-877-863-1306

EMEA

+44-20-7176-1234

Asia-Pacific

+852-2533-3565

Copyright © 2022 by S&P Global Commodity Insights, a division of S&P Global Inc. All rights reserved. No content, including by framing or similar means, may be reproduced or distributed without the prior written permission of S&P Global Commodity Insights or its affiliates. The content is provided on an "as is" basis.

spglobal.com/commodityinsights