

Permian Basin Kingdom™ Project

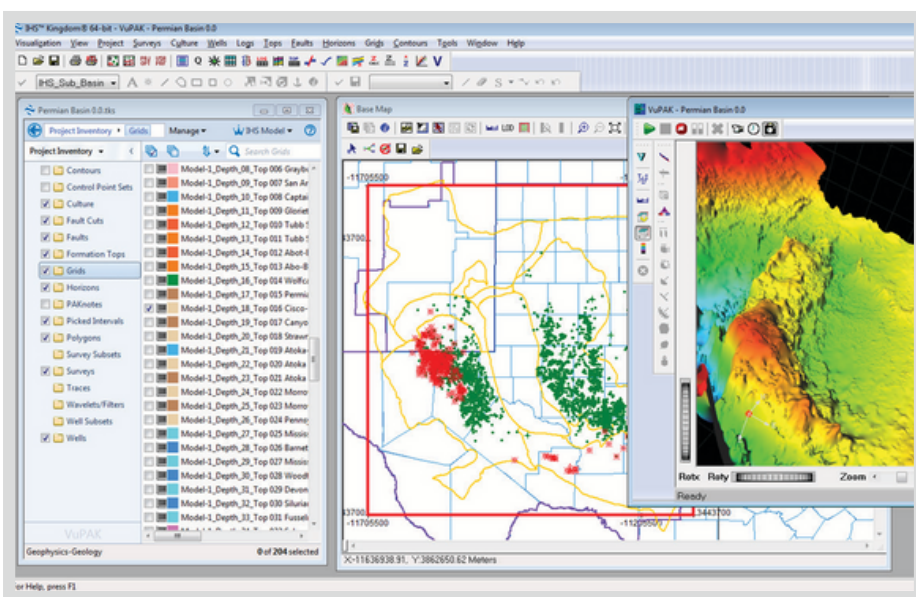
The Permian Resource
Study Delivered
in Kingdom™



The Permian Basin Kingdom™ Project contains 3D geological model of over 60 formations from the Basement to the Upper Permian, all built from S&P Global interpreted tops. The project contains cleaned Wells, Interpreted Tops, Digital Logs and Allocated Production raw data.

It also contains various types of analytical data, including Zones Attributes, and Grid files, as well as the results of an analysis of 52 plays, comprising 11 Shale (Continuous Type) and 41 Stratigraphic-Structural (Non-Continuous Type) which incorporates Producing Formation from Interpreted Tops (PRODFit), a new enhancement to the S&P Global Well database.

The objective of the project is to provide a basic ready-made geological platform and raw data for any further work on any area of interest within the basin where users can readily incorporate their proprietary and third-party data. This would save users hundreds of man hours required for data mining, population and collation. The boundary of the project follows classification and limit in the S&P Global basin database. No seismic data was used in the project and no structural interpretation and mapping was performed.



The Permian Basin Kingdom™ Project as displayed in Kingdom™

North America
Content Bundle
+ Digital Logs

515,010
Wells with
well data

322,764
Wells with
production
volumes

262,023
Wells with
S&P Global
interpreted tops

46,174
Wells with
digital logs

149
Predefined
well subsets

Total
file size

95 GB

Kingdom™ project
directory (shape files,
grids, models etc.)

36 GB

Kingdom™
project SQL
database

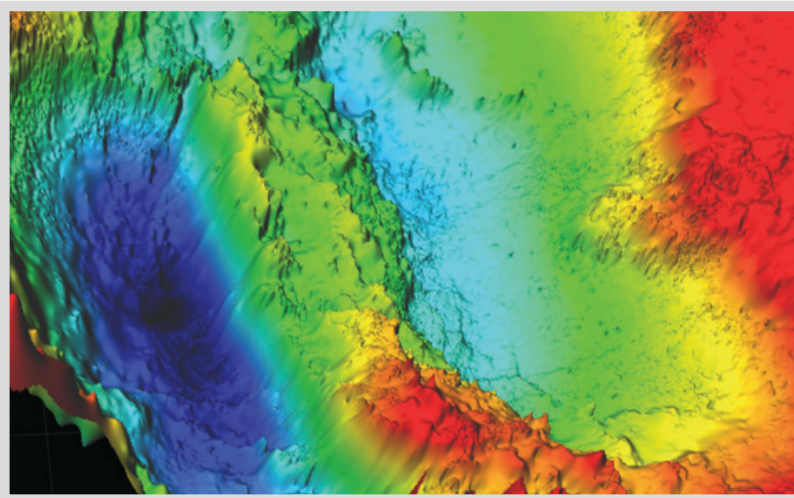
59 GB

Software Requirement

- Kingdom™ Geology package (VuPAK and EarthPAK modules)
- SQL Server

Projection System

- NAD_1927_UTM_Zone_14N,
Linear Unit: Foot_US



3D Structure Map of the Permian Basin as derived from The Permian Basin Kingdom™ Project

Kingdom™
grid data

237
Total
Kingdom™ grids

79

Top grid files

74

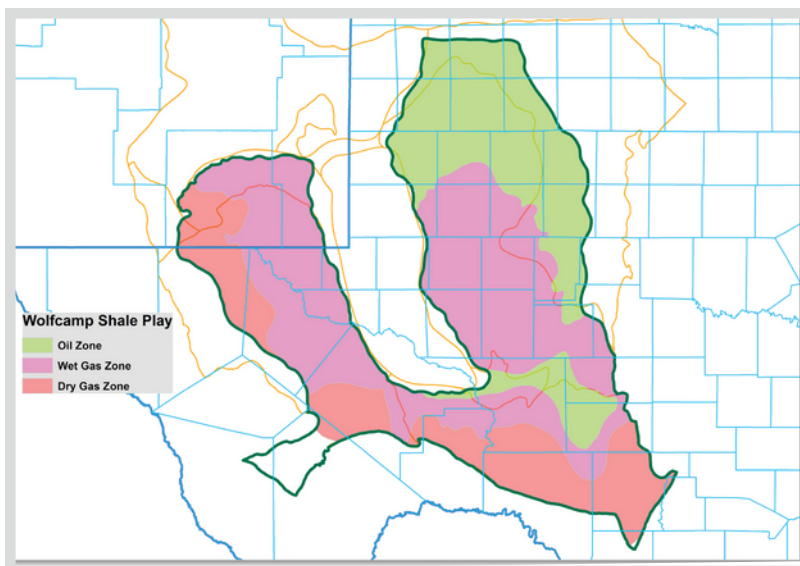
TVT grid files

75

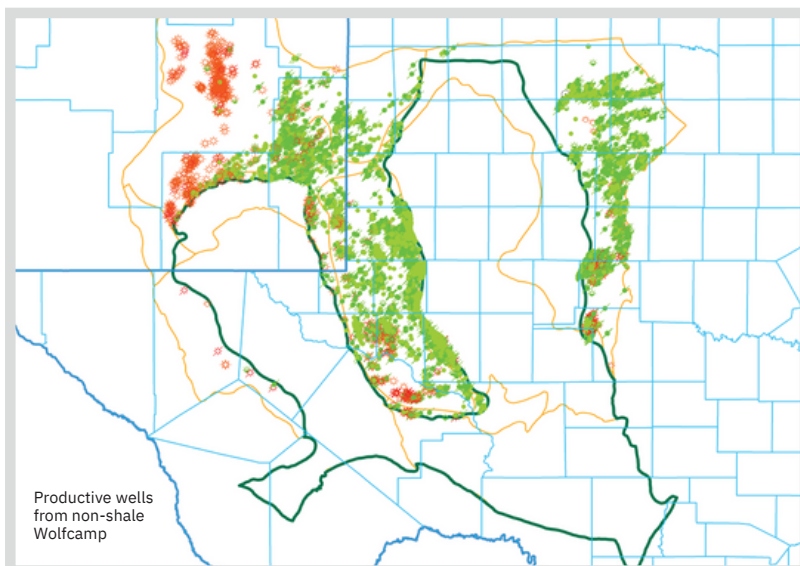
GR_arth mean

9

RO_AVG



Wolfcamp Shale Play Example derived from The Permian Basin Kingdom™ Project



Wolfcamp (Stratigraphic-Structural Play) Example derived from The Permian Basin Kingdom™ Project

About S&P Global Commodity Insights

At S&P Global Commodity Insights, our complete view of global energy and commodities markets enables our customers to make decisions with conviction and create long-term, sustainable value.

We're a trusted connector that brings together thought leaders, market participants, governments, and regulators to co-create solutions that lead to progress. Vital to navigating Energy Transition, S&P Global Commodity Insights' coverage includes oil and gas, power, chemicals, metals, agriculture and shipping.

S&P Global Commodity Insights is a division of S&P Global (NYSE: SPGI).

S&P Global is the world's foremost provider of credit ratings, benchmarks, analytics and workflow solutions in the global capital, commodity and automotive markets. With every one of our offerings, we help many of the world's leading organizations navigate the economic landscape so they can plan for tomorrow, today. For more information, visit www.spglobal.com/commodityinsights.

CONTACT US

The Americas

+1-877-863-1306

EMEA

+44-20-7176-1234

Asia-Pacific

+852-2533-3565

Copyright © 2022 by S&P Global Commodity Insights, a division of S&P Global Inc. All rights reserved. No content, including by framing or similar means, may be reproduced or distributed without the prior written permission of S&P Global Commodity Insights or its affiliates. The content is provided on an "as is" basis.

spglobal.com/commodityinsights