

Kingdom™ Geological Studies

This document provides an overview of **Kingdom Geological Studies**, including key features, benefits, and frequently asked questions about availability, pricing, and entitlements. It is a valuable resource for existing and potential customers looking to enhance their geological understanding and decision-making processes.

Introduction and Background

What is Kingdom?

Kingdom from S&P Global Commodity Insights is the ultimate collaborative exploration and production software for geoscientists. A comprehensive geoscience solution, it is optimized to help geologists and geophysicists make every subsurface interpretation project they undertake faster, more efficient, and more successful than the ones that came before it.

What are the Kingdom Geological Studies?

The Kingdom Geological Studies contain complete 3D geological models from the basement to the surface. They identify productive formations and classify them into conventional and unconventional plays. These studies also estimate Original-in-Place, Technically Recoverable, and Remaining Resource volumes.

Why are the studies important?

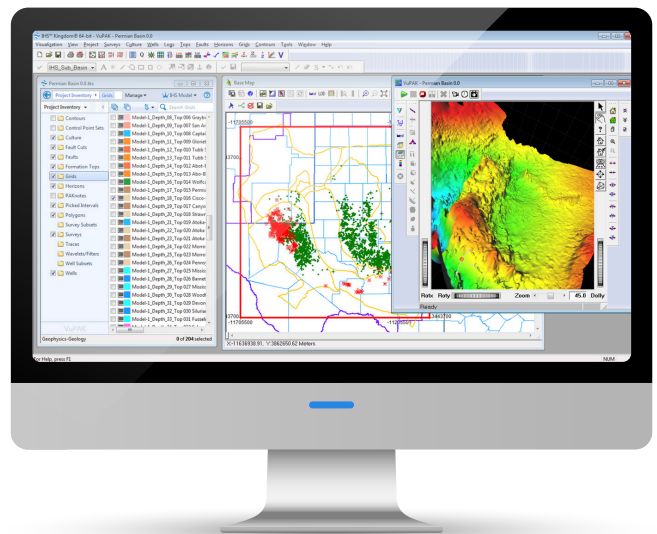
Hydrocarbon E&P companies are shifting their focus towards mature super basins due to the growing demand for cleaner energy resources. The Kingdom Geological and Resource Studies offer a unique and comprehensive understanding of mature basins, which can help resource teams achieve their goals.

The studies aim to provide a basic ready-made geological platform and raw data for further work on any area of interest within the basin where users can readily incorporate their proprietary and third-party data. This would save users hundreds of work hours required for data mining, population, and collation.

Availability and Coverage

What regions do we cover for studies?

We cover all the major mature basins in the USA and Canada. We may also cover other regions of the world if the required data is available.



Which studies are available, and when were they launched?

We have built studies in the Anadarko basin (Oklahoma), the Gulf Coast, the Powder River Basin, as well as the Permian Basin; we also have a CCUS-centric study coming for the Gulf of Mexico (offshore) as well.

- Permian Basin - Sep 2017
- Greater Anadarko Basin - Jan 2019
- Gulf Coast Basin - Jun 2022
 - South Texas (Core Eagle Ford and nearby formations)
 - East Texas and North Louisiana (Core Haynesville and nearby formations)
 - South Louisiana and the Southeast States
- Powder River Basin – May 2023

Which datasets are available within studies?

The projects contain normalized Reference Elevation, cleaned Wells, Interpreted Tops, Digital Logs, and Production raw data. They also contain various types of analytical data, including Zones Attributes, Well Subset and Grid files, as well as the results of an analysis of resource plays comprising shale (Continuous Type) and Stratigraphic/Structural (Non-Continuous Type) in shapefile format.

How often is data updated?

The raw data in studies can be updated upon client request, but the interpreted and model parts will not be updated until significant additional interpreted tops are available.

What main workflows do studies deliver?

Data mining, geological modeling, and resource estimation.

Are these studies appropriate for CCUS players?

Absolutely! These studies can perform fast screening for potential onshore depleted fields/reservoirs, which will help clients to understand the onshore subsurface before taking a deep dive into a specific AOI; the SLA/SE States cut was created with conventional operators near shore and CCUS companies in mind as a starting point.

Access and packages

What are the prerequisites for acquiring the study?

- Kingdom (full SQL required)
- Base content bundle (within the AOI)
- Digital Logs (within the AOI)

How are the studies delivered?

The studies can be downloaded to the client's desktop from the Subsurface Solutions page (Geological Studies) within the [Energy Portal](#).

Who can access studies?

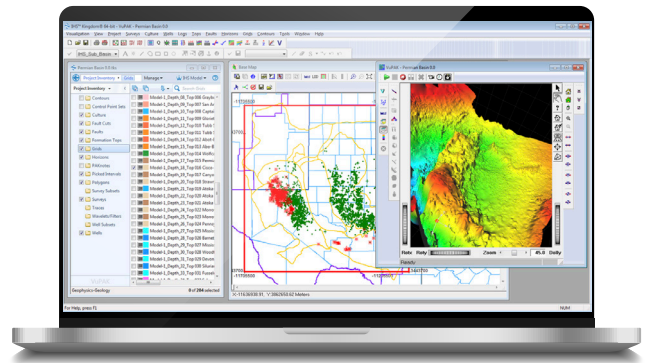
Any client with valid credentials and prerequisites. If you are interested in accessing the Kingdom Studies, please contact your sales representative or the subsurface content team - travis.hagler@spglobal.com, peace.eze@spglobal.com, or prithiraj.chungkham@spglobal.com

How are the studies sold and entitled?

They are entitled enterprise-wide and sold as a content subscription.

Who would benefit from purchasing studies?

Any company with an existing or potential interest in the region, covered by studies, looking to understand technically recoverable resources.



- E&P Exploration and A&D Teams
- Financial Capital Markets
- Government agencies

What are the benefits of studies?

With the Kingdom Projects, users have the necessary tools to:

- Save hundreds of work hours by accessing all necessary data and analysis in one place, saving time on data mining, population, and collation
- Utilize this powerful platform for quick evaluation of a basin of interest
- Fast-track their existing interpretation efforts in a play, enter new parts of the play, or take up a new play
- Integrate their proprietary and third-party data into the study, enabling seamless collaboration
- Run fast screening for depleted reservoirs for CCUS/ Enhanced oil recovery potential

Resources and contacts

Where can I find additional resources?

- [Powder River Basin product page](#)
- [Powder River Basin brochure](#)
- [Permian Basin brochure](#)
- [Greater Anadarko Basin brochure](#)
- [Gulf Coast Basin brochure](#)
- [Energy Portal](#) (product login for existing customers)

Whom can I contact to learn more?

- [Customer Services](#)

About S&P Global Commodity Insights

At S&P Global Commodity Insights, our complete view of global energy and commodities markets enables our customers to make decisions with conviction and create long-term, sustainable value.

We're a trusted connector that brings together thought leaders, market participants, governments and regulators, and we create solutions that lead to progress. Vital to navigating commodity markets, our coverage includes oil and gas, power, chemicals, metals, agriculture, shipping and energy transition. Platts® products and services, including the most significant benchmark price assessments in the physical commodity markets, are offered through S&P Global Commodity Insights.

S&P Global Commodity Insights is a division of S&P Global (NYSE: SPGI).

S&P Global is the world's foremost provider of credit ratings, benchmarks, analytics and workflow solutions in the global capital, commodity and automotive markets. With every one of our offerings, we help many of the world's leading organizations navigate the economic landscape so they can plan for tomorrow, today. For more information visit www.spglobal.com/commodityinsights.

CONTACT US

Americas

+1 800 447 2273

EMEA

+44(0) 134 432 8300

Asia-Pacific

+604 291 3600

Japan

+81 3 6262 1887

Customer Care

ci.support@spglobal.com