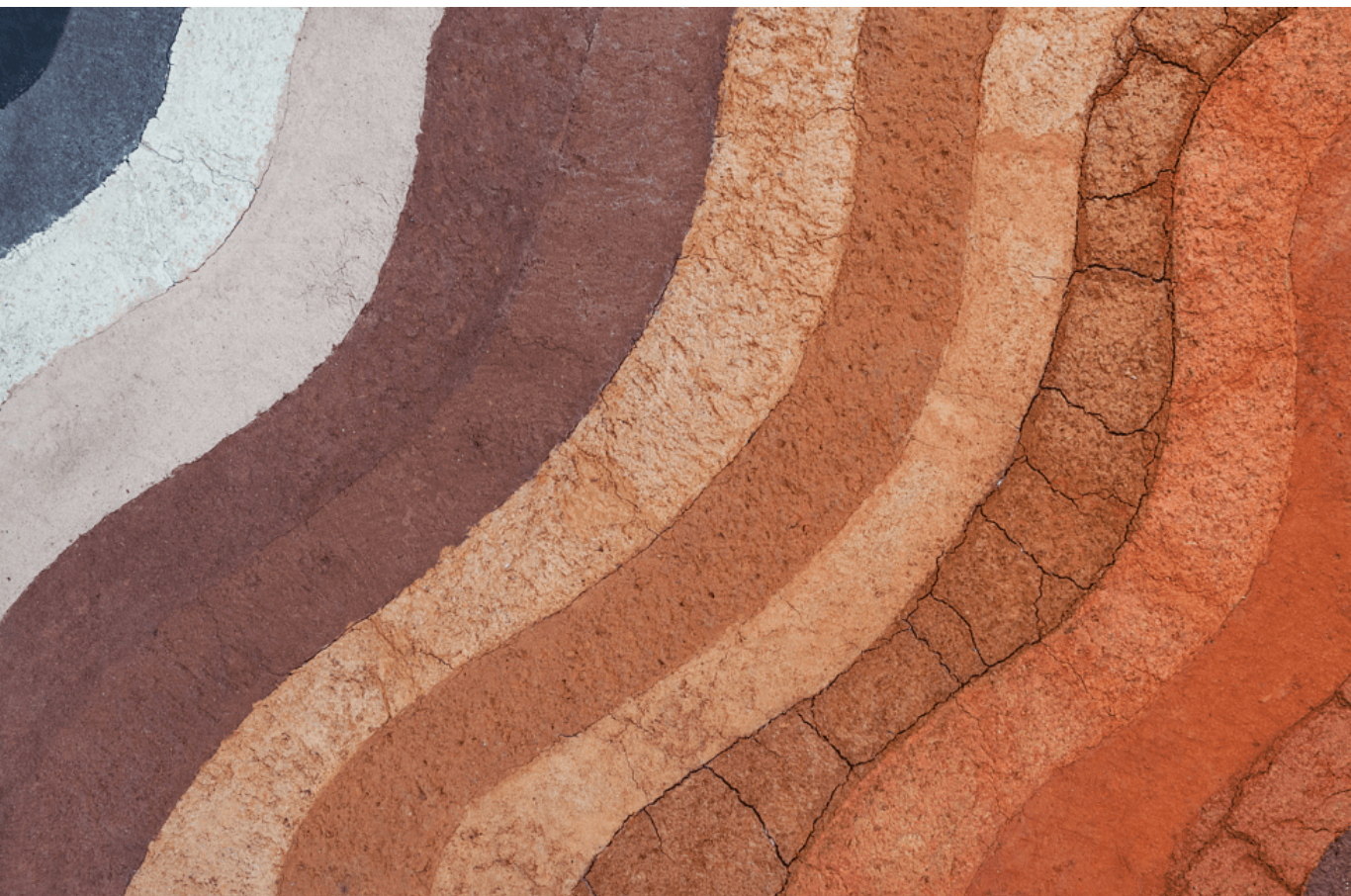


Powder River Basin Kingdom™ Project

The Powder River Basin Resource Study
Delivered in Kingdom



The Powder River Basin: A Rich History and Promising Future

The Powder River Basin is a significant intermontane basin in the northern Rocky Mountains area, spanning northeastern Wyoming and southeastern Montana, USA. The first oil discovery was made in the late 1880s, with vertical production peaking in 1985 and declining until 2010. However, horizontal drilling and multistage fracking emerged in 2010, which not only stopped the decline but also rapidly increased production, surpassing the previous vertical peak.

Introducing the Powder River Basin Kingdom Study

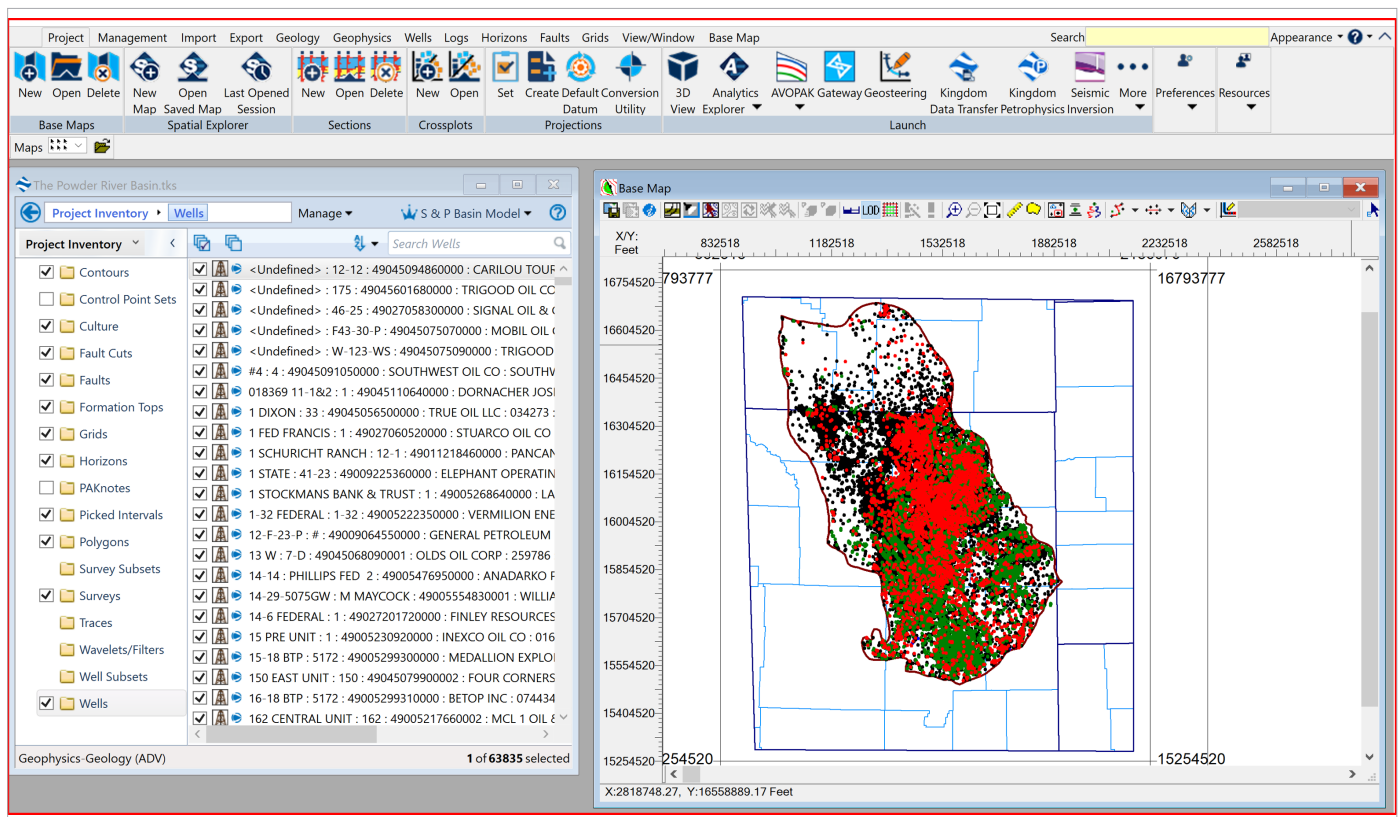
The Powder River Basin Kingdom study is a comprehensive data and analysis offering that features a 3D geological model of 64 formations, ranging from the Pennsylvanian to the Upper Cretaceous, constructed from S&P Global Commodity Insights interpreted tops. The study covers the entire stratigraphic section of the basin, spanning 21,511 SqMi (55,712 SqKm). It identifies productive formations, classifies them into conventional and unconventional plays, and estimates Original-in-Place, Technically Recoverable and Remaining Resource volumes.

Empowering Data-Driven Decisions

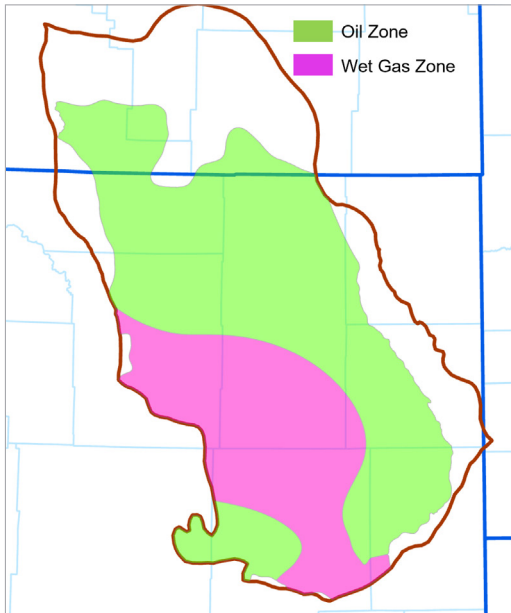
The Powder River Basin Kingdom study provides a comprehensive geological platform and raw data for any future work within the basin, enabling data-driven decision-making for a range of potential applications, including CCUS potential. The project boundary conforms to the classification and limit set in the S&P Global Commodity Insights basin database, ensuring consistency and accuracy in the data provided.

With the Powder River Basin Kingdom study, users have the necessary tools to:

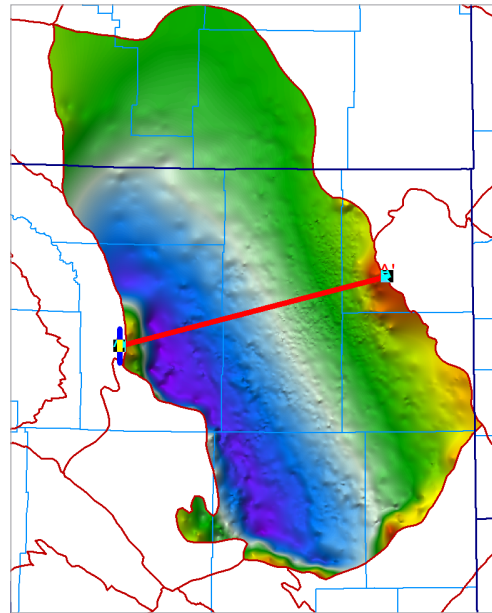
- Save hundreds of work hours by accessing all necessary data and analysis in one place, saving time on data mining, population, and collation
- Utilize this powerful platform for quick screening
- Fast-track their existing interpretation efforts in a play, enter new parts of the play, or take up a new play
- Integrate their proprietary and third-party data into the study, enabling seamless collaboration
- Run fast screening for depleted reservoirs for CCUS potentials



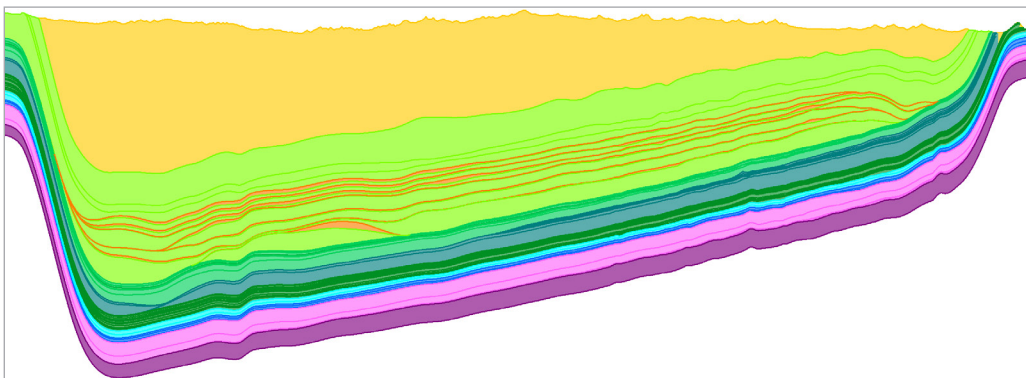
Kingdom map view of the Powder River Basin study showing data and project extents.



Play extent map (continuous play)



3D Structure map



Regional Geological Section

A Comprehensive Data and Analysis Offering

In addition to the 3D geological model, the project includes the following data:

- Normalized Reference Elevation
- Cleaned Wells
- Interpreted Tops
- Digital Logs
- Production Raw Data
- Analytical Data (Zones Attributes, Well Subset, and Grid Files)

The study also includes the results of the comprehensive analysis of 33 plays:

- 10 Shale/Carbonate (Continuous Type)
- 23 Stratigraphic/Structural (Non-Continuous Type)

Project Folder size

14GB

Kingdom project directory (shape files, grids, models etc.)

4GB

Kingdom project SQL database

10GB

Software Requirement

- Kingdom Geology package (VuPAK and EarthPAK modules)
- SQL Server

Projection System

- NAD_1927_UTM_Zone_13N,
Linear Unit: Foot_US

About S&P Global Commodity Insights

At S&P Global Commodity Insights, our complete view of global energy and commodities markets enables our customers to make decisions with conviction and create long-term, sustainable value.

We're a trusted connector that brings together thought leaders, market participants, governments and regulators, and we create solutions that lead to progress. Vital to navigating commodity markets, our coverage includes oil and gas, power, chemicals, metals, agriculture, shipping and energy transition. Platts® products and services, including the most significant benchmark price assessments in the physical commodity markets, are offered through S&P Global Commodity Insights.

S&P Global Commodity Insights is a division of S&P Global (NYSE: SPGI).

S&P Global is the world's foremost provider of credit ratings, benchmarks, analytics and workflow solutions in the global capital, commodity and automotive markets. With every one of our offerings, we help many of the world's leading organizations navigate the economic landscape so they can plan for tomorrow, today. For more information visit www.spglobal.com/commodityinsights.

CONTACT US

Americas

+1 800 447 2273

EMEA

+44(0) 134 432 8300

Asia-Pacific

+604 291 3600

Japan

+81 3 6262 1887

Customer Care

ci.support@spglobal.com