

Trading Analytics - Equity TCA (Sellside)

An independent Equity TCA tool that provides global empirical performance data to help measure and manage best execution.

Our tool combines execution, algorithmic, venue and smart order evaluation analytics to enhance trading-related execution quality management and reporting capabilities.

Evolving market practices and global regulations such as MiFID II have increased scrutiny over best execution practice. As the concept of best execution has developed from the best available price at a point in time to a more holistic view of the investment process, the need to measure and manage increasingly complex trades and execution processes has grown significantly.

Our equity TCA platform meets the rigorous performance verification needs of execution providers' trading customers. Our solution allows for actionable insight to enhance and synchronize trading related execution quality and delivers trading intelligence valued by trading desks. Our service provides the metrics necessary to streamline performance-based order routing and help with optimal trade strategy selection. In addition, toxic liquidity and front-running surveillance tools accurately differentiate the performance of alternative execution channels.

Multifaceted

Our TCA solution supports a multidimensional evaluation of "best execution" that reflects the parameters and priorities of institutional trading; including isolating the cost impact for your clients, reporting on several different trade characteristics that fit client needs.

Configurable

Profile historical and prospective client trading performance from multiple perspectives and independently verify the value of "high touch" services or electronic equity execution offerings.

Transparency

Enhances the calibration of technology driven offerings such as algorithms and smart order routers with normalized comparison data. Integrate order parameters filters to fine tune automated strategies which allows an independent, transparent overview of execution quality.

Insight

Evaluates and synchronizes each "child" level execution to the prevailing market conditions. This granular level of analysis translates into the ability to isolate the cumulative price impact of an order and produces a number of unique liquidity management metrics.

Comply

A flexible report generation tool facilitates surveillance, supervision and management reporting requirements including, MiFID II best execution requirements, PRIIPS's total cost and charges, and SEC 605/606 compliance reporting.

Contextualize

Access to pre-trade forecasting tools for significantly improved price impact estimate accuracy. A comprehensive range of pre-trade analytics include individual and programme level metrics.

Key Stats

58+
countries
covered

175+
exchanges

Customers

Hedge Funds

Asset Managers

Banks

Pension Funds

ETF Providers

Broker Dealers

Web-based analytics & reporting services

The TCA platform is a fully functional research ecosystem. It combines the industry's comprehensive historical trading performance metrics, with up to date forecasts and directional signals. A full array of intra-day risk and correlation measures support hedging, composition and prioritization decisions. Data enrichment options allow for comprehensive order tracking including cancellations, limits and venue routing.

Venue analysis

The ability to communicate venue information back to your clients in an independent and automated fashion.

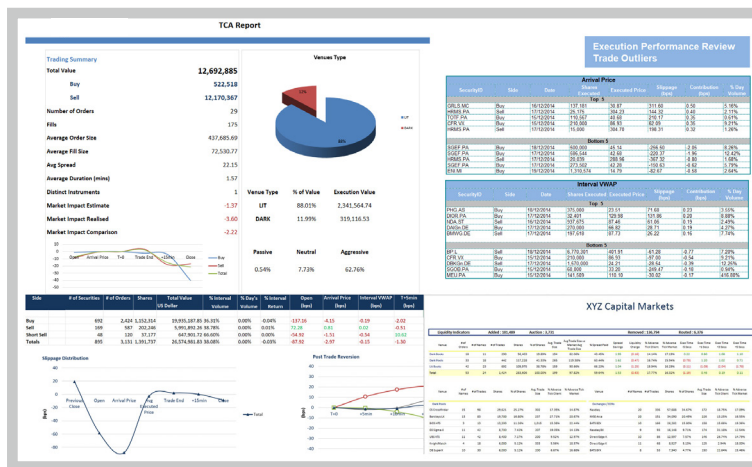
Last Market	# of Strikes	Total Value	% of Value	% Spread Paid	Avg Trade Size Vs Market Avg Trade Size	Liquidity Charge	% Adverse Tick Client	% Adverse Tick Market	10 Second Post-Trade	30 Second Post-Trade
XPAR	89,443	871,953,334	14.63%	49.70%	133.61%	-0.82	16.92%	12.89%	-4.05	-5.54
XLON	60,835	588,172,136	9.87%	46.28%	119.16%	-1.05	16.94%	17.47%	-2.91	-3.19
AQXK	61,042	462,412,701	7.76%	71.57%	108.08%	-2.11	46.05%	14.55%	-2.65	-3.17
CHIX	101,139	449,729,550	7.54%	45.09%	59.61%	-0.74	15.97%	14.55%	-0.73	-1.12
TROM	3,810	317,694,651	5.33%	46.51%	964.22%	-0.82	28.07%	15.30%	-2.71	-3.02
XETR	19,336	312,067,253	5.23%	44.03%	104.31%	-1.27	11.04%	23.27%	1.48	1.86

Strategy analysis

Quickly filter for a client's order flow, drill down on strategy usage and performance.

Strategy Type	Total Value	% of Value	% Interval Volume	% of Day's Volume	% Spread Paid	Avg Trade Size Vs Market Avg Trade Size	Arrival Price	Interval VWAP	Market Liquidity Charge Estimate	Cumulative Liquidity Charge	Timing Consequence	Execution Differential
VWAP	1,052,665,374	34.65%	3.72%	1.39%	42.50%	90.56%	-13.72	-2.30	-7.25	-6.03	-7.60	-13.63
TargetClose	696,505,016	22.93%	3.91%	0.84%	52.88%	93.43%	-1.49	-0.65	-5.69	-8.51	3.97	-4.55
PVOL	448,888,860	14.77%	12.27%	1.09%	56.48%	109.38%	-12.59	-2.02	-7.87	-14.66	1.56	-13.10
DynamicPounce	391,391,650	12.88%	23.26%	2.68%	54.95%	131.18%	-15.48	3.12	-11.69	-11.04	-1.74	-12.78
OnClose	177,036,800	5.83%	9.25%	1.76%	88.21%	62.77%	-0.95	-0.62	-26.97	-18.94	-53.87	-72.81
Twap	126,955,135	4.18%	2.52%	1.23%	42.77%	78.86%	-18.94	-5.42	-8.14	-8.15	-12.45	-20.60
Step	35,750,918	1.18%	7.72%	1.14%	61.46%	110.65%	-13.62	11.37	-9.07	-15.76	9.70	-6.06
IS	34,229,942	1.13%	29.65%	0.79%	55.68%	121.82%	0.87	1.14	-21.95	-23.96	24.89	0.93
DarkSeek	24,410,112	0.80%	39.96%	1.72%	57.78%	347.90%	-19.65	0.31	-10.02	-2.69	-17.90	-20.59
Reload	20,939,398	0.69%	49.35%	1.05%	46.65%	121.31%	17.32	12.90	-3.56	-5.46	10.73	5.27
Pounce	12,409,513	0.41%	39.98%	3.35%	59.11%	118.67%	-11.47	-4.70	-9.08	-9.70	-2.57	-12.28
Peg	6,542,782	0.22%	16.47%	1.47%	42.05%	140.91%	18.63	5.39	-65.89	-2.75	21.69	18.94
TargetOpen	6,444,050	0.21%	6.71%	0.45%	53.89%	77.34%	-1.28	18.97	-2.70	-2.51	1.52	-0.99
Switch	4,010,851	0.13%	14.40%	0.57%	41.95%	112.00%	13.58	42.89	-7.89	-14.85	-2.26	-17.12
Total	3,038,180,402	100.00%	8.96%	1.35%	49.46%	101.99%	-9.98	-0.78	-8.81	-9.73	-3.27	-13.00

TCA Sellside report examples



CONTACT US

The Americas

+1 212 849 3733

EMEA

+44 (0) 20 7260 2055

Asia-Pacific

+852 3844 0103

Copyright © 2022 by S&P Global Market Intelligence, a division of S&P Global Inc. All rights reserved. No content, including by framing or similar means, may be reproduced or distributed without the prior written permission of S&P Global Market Intelligence or its affiliates. The content is provided on an "as is" basis.

spglobal.com/marketintelligence