

# Component Forecast Analytics

Comprehensive supply-chain analytics enabling suppliers to grow vehicle component market share and assess future technologies.



Assessing the symbiotic relationship between automakers and suppliers requires new intelligence. IHS Markit Component Forecast Analytics provides timely, reliable, and comprehensive automotive component and technology forecasts from one of the most trusted sources in the industry.

#### Component Forecast Analytics helps:

- Gain transparency into competitors' books of business\*
- Assess supplier plant locations and capacities\*
- Source new opportunities through a six-year forecast calendar of new programs\*
- Understand customers' purchasing strategies\*
- Measure a supplier's market power in relation to its OEM partnerships\*

\*depending on subscription level



## Three levels of granularity to fit your needs



### **6 year model-level forecasts for over 90 components**

With model-level database and 75+ analytics. Available by component or subsystem. (some forecasts extend beyond 6 years)



### **6 year OEM-level forecasts for over 150 components**

With OEM-level forecast database and 35+ analytics. Available by individual components.



### **OEM-Supplier relationships identified for over 600 components across 11 domains.**

Includes relational OEM-level database and five analytics. Available by domain.

## From a leading provider of vehicle volume forecasts

Our component forecasts are linked to our underlying Production and Powertrain Forecasts, allowing for greater timeliness of volume changes and consistency between datasets. Our knowledgeable, experienced industry experts average 12 years of automotive experience and are located in all key automotive and technology hubs around the world. Our research process includes peer-level interviews and discussions. Our extensive network of contacts within OEMs and suppliers provides enhanced intelligence; we talk to the experts rather than sending them questionnaires.





## Data and analytics at your finger tips

Component Forecast Analytics is housed on our AutoTechInsight portal ([autotechinsight.ihsmarket.com](http://autotechinsight.ihsmarket.com)) and enables you to quickly and easily access insights or run your own queries.

### Query Tool

Intuitive and easy to use

The screenshot shows the AutoTechInsight Query Tool interface. It features a sidebar with filters for Component, Technology, and Supplier. The main area displays a table with columns for Component, Service, Forecast Date, and various vehicle attributes like VIN, Production Brand, Production Nameplate, Platform, Program, Region, Country, and Sales Segments. The table contains multiple rows of data, including details for components like 'Headlight Systems' and 'Wiper Systems' across different vehicle models and regions.

- Filter, order and preview data on screen
- Download your queried data into Excel
- Toggle between Installation vs. Production
- Save and load your queries for quick access to data

### Analytics

Availability of analytics is based on solutions



#### Market Share

Assess relative market positioning over time



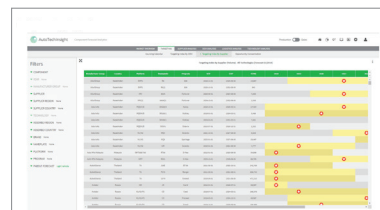
#### Supplier Book of Business

Review with whom suppliers will be generating revenue



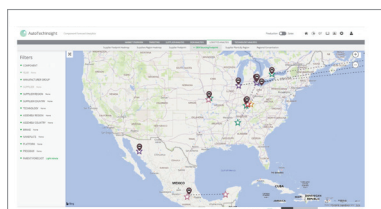
#### Technology Demand

Measure demand associated with selected technologies



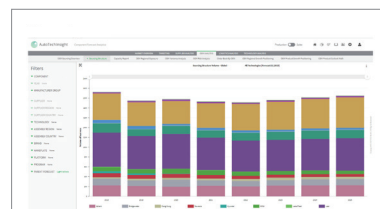
#### Targeting Index

Identify what suppliers will be bidding for



#### Logistics Analysis

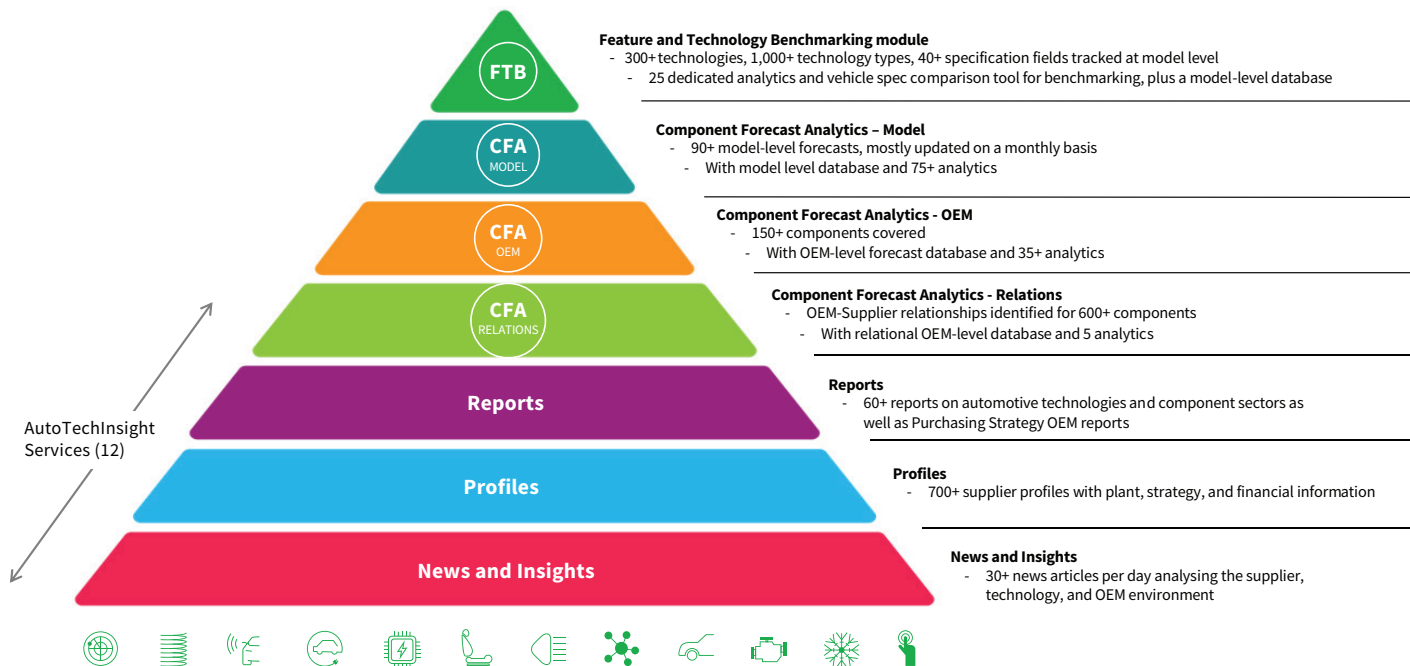
Understand OEM sourcing footprints



#### Sourcing Structure

Review a specific OEM in a region

# Automotive Supply Chain and Technology portfolio



Learn more at [autotechinsight.ihsmarket.com](https://autotechinsight.ihsmarket.com)  
 or email [automotive@ihsmarket.com](mailto:automotive@ihsmarket.com)

## CUSTOMER CARE

### NORTH AND SOUTH AMERICA

**T** +1 800 447 2273  
 +1 303 858 6187 (Outside US/Canada)

### EUROPE, MIDDLE EAST AND AFRICA

**T** +44 1344 328 300

### ASIA PACIFIC

**T** +604 291 3600

**E** [CustomerCare@ihsmarket.com](mailto:CustomerCare@ihsmarket.com)

## About IHS Markit

IHS Markit (NYSE: INFO) is a world leader in critical information, analytics and expertise to forge solutions for the major industries and markets that drive economies worldwide. The company delivers next-generation information, analytics and solutions to customers in business, finance and government, improving their operational efficiency and providing deep insights that lead to well-informed, confident decisions. IHS Markit has more than 50,000 business and government customers, including 80 percent of the Fortune Global 500 and the world's leading financial institutions. Headquartered in London, IHS Markit is committed to sustainable, profitable growth.