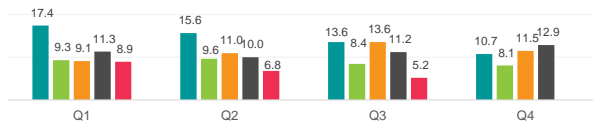


Securities Lending Returns in MSCI Emerging Markets

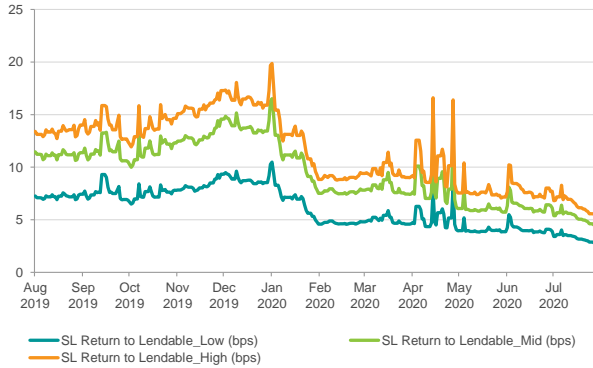


The MSCI Emerging Markets Index measures the performance of the large and mid cap segments across 26 emerging markets countries. The index covers approximately 85% of the free float-adjusted market capitalization in each country. IHS Markit provides the securities lending return made from securities in the index since 2015 and further provides a break down by fee categories, top countries & sectors as well as the level of short interest in the index constituents. There are currently 596 securities on loan out of the 1385 securities in the index.

SL Returns to Lendable (bps) : Quarterly Comparison



SL Returns to Lendable : Aug 19 to Jul 20



| Indexed Short Interest | 2016 | 2017 | 2018 | 2019 | 2020* |
|------------------------|-------|-------|-------|------|-------|
| End of Year Levels | 139.0 | 156.9 | 144.1 | 92.6 | 89.5 |
| YOY change | 4% | 13% | -8% | -36% | -3% |

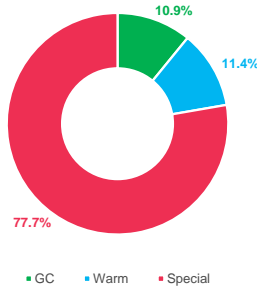
Index base date : 1st Jan 2015

* as of 31st July 2020

| Period | SL Return to Lendable_Low (bps) | | SL Return to Lendable_Mid (bps) | | SL Return to Lendable_High (bps) | |
|------------------|---------------------------------|------|---------------------------------|------|----------------------------------|------|
| | 2020 | 2019 | 2020 | 2019 | 2020 | 2019 |
| Annualized | | | | | | |
| Jan | 6.9 | 6.3 | 10.9 | 9.6 | 12.9 | 11.6 |
| Feb | 4.7 | 6.0 | 7.7 | 9.0 | 9.0 | 10.9 |
| Mar | 5.0 | 9.9 | 8.0 | 14.9 | 9.6 | 17.5 |
| Apr | 5.2 | 7.7 | 8.3 | 11.7 | 10.2 | 14.1 |
| May | 4.0 | 5.8 | 6.0 | 9.0 | 7.6 | 10.9 |
| Jun | 4.1 | 5.9 | 6.3 | 9.2 | 7.9 | 11.1 |
| Jul | 3.2 | 7.0 | 5.2 | 10.9 | 6.4 | 13.1 |
| Aug | - | 7.2 | - | 11.2 | - | 13.4 |
| Sep | - | 7.6 | - | 11.6 | - | 14.0 |
| Oct | - | 7.4 | - | 11.6 | - | 13.9 |
| Nov | - | 8.3 | - | 13.0 | - | 15.8 |
| Dec | - | 8.9 | - | 13.9 | - | 16.6 |
| YTD | 4.7 | 7.0 | 7.4 | 10.7 | 9.1 | 12.8 |
| Full Year | 4.7 | 7.4 | 7.4 | 11.3 | 9.1 | 13.6 |
| Aug 19 to Jul 20 | 6.0 | | 9.4 | | 11.4 | |

SL Revenue Contribution by Fee Categories

Annual Contribution by Fee Categories: Aug 19 to Jul 20



| Period | GC Contribution | | Warm Contribution | | Special Contribution | | Warm Securities | | Special Securities | |
|--------|-----------------|------|-------------------|------|----------------------|------|-----------------|------|--------------------|------|
| | 2020 | 2019 | 2020 | 2019 | 2020 | 2019 | 2020 | 2019 | 2020 | 2019 |
| Month | | | | | | | | | | |
| Jan | 9% | 15% | 8% | 12% | 83% | 73% | 146 | 126 | 89 | 150 |
| Feb | 13% | 16% | 10% | 11% | 77% | 73% | 148 | 125 | 82 | 130 |
| Mar | 13% | 10% | 10% | 9% | 76% | 81% | 147 | 132 | 93 | 134 |
| Apr | 12% | 12% | 13% | 11% | 75% | 77% | 149 | 127 | 94 | 131 |
| May | 16% | 16% | 18% | 16% | 67% | 68% | 128 | 123 | 96 | 130 |
| Jun | 16% | 13% | 18% | 16% | 65% | 71% | 112 | 120 | 87 | 125 |
| Jul | 19% | 10% | 21% | 13% | 60% | 77% | 113 | 124 | 76 | 112 |
| Aug | - | 10% | - | 10% | - | 80% | - | 124 | - | 109 |
| Sep | - | 10% | - | 13% | - | 78% | - | 128 | - | 111 |
| Oct | - | 9% | - | 11% | - | 80% | - | 144 | - | 96 |
| Nov | - | 8% | - | 8% | - | 84% | - | 147 | - | 99 |
| Dec | - | 7% | - | 8% | - | 85% | - | 150 | - | 94 |

Top Sectors & Countries by SL Revenue and SL Return to Lendable for Jul 2020

| Top 3 Sectors by SL Return to Lendable | SL Return to Lendable (bps) | SL Revenue Contribution |
|--|-----------------------------|-------------------------|
| Transportation | 29.0 | 6.4% |
| Consumer Durables & Apparel | 23.4 | 8.2% |
| Consumer Services | 16.6 | 7.9% |

| Top 3 Sectors by SL Revenue | SL Revenue Contribution |
|--|-------------------------|
| Technology Hardware & Equipment | 12.3% |
| Semiconductors & Semiconductor Equipment | 10.7% |
| Insurance | 9.5% |

| Top 3 Countries by SL Return to Lendable | SL Return to Lendable (bps) | SL Revenue Contribution |
|--|-----------------------------|-------------------------|
| Turkey | 86.1 | 6.8% |
| Greece | 51.4 | 0.1% |
| Brazil | 20.9 | 0.2% |

| Top 3 Countries by SL Revenue | SL Revenue Contribution |
|-------------------------------|-------------------------|
| Hong Kong | 48.9% |
| South Korea | 18.8% |
| Taiwan | 13.4% |

Notes

- SL Return to Lendable_Low: Returns from securities lending relative to lendable value from all the lender funds who are part of the IHS Markit Securities Finance group
- SL Return to Lendable_Mid: Returns from securities lending relative to lendable value from only those lender funds with active loans in respective market areas that are part of the index. Funds are classified as active on a daily basis for individual market areas. This metric is used in the report unless stated otherwise
- SL Return to Lendable_High: Returns from securities lending relative to lendable value from only those lender funds with the highest loan value that represent 80% of the cumulative loan value in respective market areas that are part of the index. Funds are classified on a daily basis for individual market areas within the index.
- Indexed Short Interest: Indexed Short Interest tracks the daily change in short interest relative to market capitalization calculated for the MSCI index with an index base date of 1st Jan 2015 where the index is set to a base value of 100
- Country Classification: Country classification for common equity securities done by IHS Markit Securities Finance is based on the country in which the security is traded with the exception of depositary receipts which are based upon the country of domicile
- Fee Classification: Securities with value weighted average securities lending fee of <= 35 bps are classified as GC, > 35 bps & <= 150 bps are classified as Warm and > 150 bps are classified as Special. This fee classification is done on a daily basis