



Energy Map Services

IHS Markit's Energy Map Services connects you directly to the most up-to-date and comprehensive source of global energy spatial information.

GIS data management teams face a constant struggle to keep their spatial databases up-to-date with all the latest information. The costs and hassle of managing, hosting and caching spatial data are considerable. Users get frustrated because their map data rapidly gets out of date, and map draw speeds are too slow. New web-mapping technology has raised expectations and increased demand with new user groups now requiring easy access to spatial data.

Fast, Efficient & Flexible Mapping Solutions

IHS Markit's Energy Map Services is a suite of map services that enables your Esri mapping software to show the most up-to-date IHS Markit energy information by connecting directly to our Energy Spatial Database over the Internet.

Who uses Energy Map Services?

GIS analysts, engineers, geologists and other E&P professionals use our Energy Map Services to make maps that drive better and more timely exploration, production and midstream decisions.

How is Energy Map Services used?

Energy Map Services is used to deliver IHS Markit's spatial content to your mapping tool of choice. Whether it's IHS Markit, Esri, other 3rd party software, or custom mapping applications, Energy Map Services enables you to easily mash up IHS Markit spatial content with your other data sources to produce compelling maps with the most up-to-date information.

Featured Content

Global Wells – IHS Markit's Well database (more than 6.1 million) becomes evident as current global well activity can be seen widespread and in a historic context, all the way back to the earliest wells in the late 1700's in the Netherlands.

Global Fields – The three main IHS Markit databases; U.S., Canadian and International, have been integrated to deliver a global standardized field layer. Attributes include field name, standardized hydrocarbon type, field production status, location information and lithology and lithostrat information. U.S. fields are based upon the assigned well to field relationship. Data is updated daily.

Global Unconventional Plays – The three main IHS Markit databases; U.S., Canadian and International, have been integrated to deliver a global standardized play layer. Attributes include standardized play name, play type, play status and general geological information on lithology and lithostrat units. Data is updated daily.

BENEFITS:

Map Services enables your Esri mapping software to show the best and latest IHS Markit energy information by connecting directly to our Energy Spatial Database over the Internet.

- Daily updates ensure the most current information resulting in the best possible decisions
- IHS Markit hosting takes the cost and hassle out of manually loading spatial databases
- Fast map draw speeds at all scales ensures great user experience
- Multiple protocols put the power of IHS Markit data in a variety of critical mapping applications
- Open APIs provide developers the flexibility to build compelling map apps

Featured Content

Global Basins – More than 570 basins worldwide. IHS Markit's Basin database contains more than 5,200 spatial representations of geological provinces, including North America.

North American Onshore Rig Activity – Monitor rig activity and rig availability, plan supply inventory, benchmark drilling times and total depths, and more with daily updates, activity reports and maps depicting all North American rig operations - including operator, contractor, location and permit data.

U.S. Wells – With more than 3.5 million current and historic well records, the IHS Markit Well database is the largest, most comprehensive U.S. well database, accounting for virtually every well drilled and produced back to 1859.

U.S. Production – An extensive historic database, contains reliable oil, gas, and water cumulatives and monthly production volumes on over 1.7 million U.S. producing entities. Our database is the most comprehensive U.S. production database available, tracking 98% of all production.

U.S. FieldMap – Get a reconnaissance view of production trends over large areas with our FieldMap database. Created using data on more than 1.7 million producing properties from our market-leading energy database, these field outlines include details for each field—providing a snapshot of the field's beginning production, last production, active wells and cumulative production.

U.S. Land – Land information is critical to the oil and gas industry for leasing, land records research, mergers and acquisitions, business development, exploration, exploitation, competitor analysis, regulatory compliance and many more uses.

U.S. Geological Structure Contours – Get a basin's geological overview, understand its structure and stratigraphy. Map overall geologic structures using a consistent stratigraphic framework for an entire basin. Understand a basin's depositional environment --- trap components, source rock pathways, faults, domes and hydrocarbon maturation.

International E&P Database – The most comprehensive and reliable dataset available to oil and gas industry professionals today. This information supports both your economic and geological workflows. Our E&P reporting service provides definitive, up-to-date and accurate current, historical and planned activity in the global E&P sector.

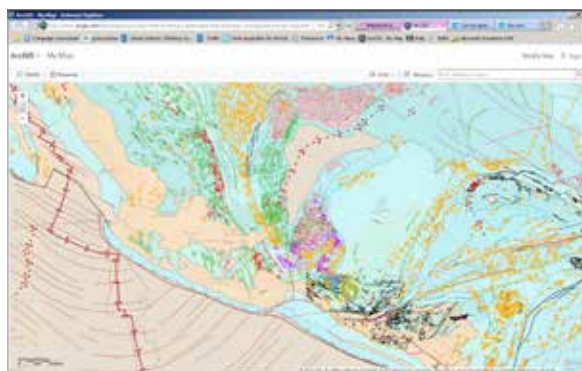
International Basins – Our basins module contains information on more than 570 basins worldwide. IHS Markit offers the largest set of basin studies and related geological information for global analysis of petroleum systems and plays.

International Midstream Essentials – Provides you with key information on the location, capacity and ownership of oil and gas transportation, processing and primary market infrastructures enabling both early screening and more advanced analysis of infrastructure issues that can impact the success of your project and asset decisions.

International Culture – This geographic content serves as a foundational background for high-quality maps. New and updated features are regularly added to provide the most current, accurate coverage. Content includes a worldwide set of bathymetry, political, administrative and licensing grid layers which are integrated with our E&P information allowing for spatial analysis and validation.



Permian Basin Structure Contours viewed in ArcGIS Online



Gulf of Mexico Geological Basin details viewed in ArcGIS Online

For more information www.ihsmarkit.com/energy-map-services

CUSTOMER CARE

NORTH AND SOUTH AMERICA

T +1 800 301 7334
+1 303 858 6187 (Outside US/Canada)

EUROPE, MIDDLE EAST AND AFRICA

T +44 1344 328 300

ASIA PACIFIC

T +604 291 3600

E CustomerCare@ihsmarkit.com

About IHS Markit

IHS Markit (Nasdaq: INFO) is a world leader in critical information, analytics and solutions for the major industries and markets that drive economies worldwide. The company delivers next-generation information, analytics and solutions to customers in business, finance and government, improving their operational efficiency and providing deep insights that lead to well-informed, confident decisions. IHS Markit has more than 50,000 key business and government customers, including 85 percent of the Fortune Global 500 and the world's leading financial institutions. Headquartered in London, IHS Markit is committed to sustainable, profitable growth.