

Kingdom®

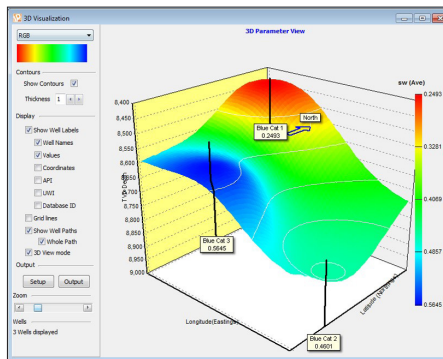
Petrophysics

Boost the efficiency and accuracy of your interpretations by combining deep science with predefined and guided workflows to characterize the properties of any type of reservoir.

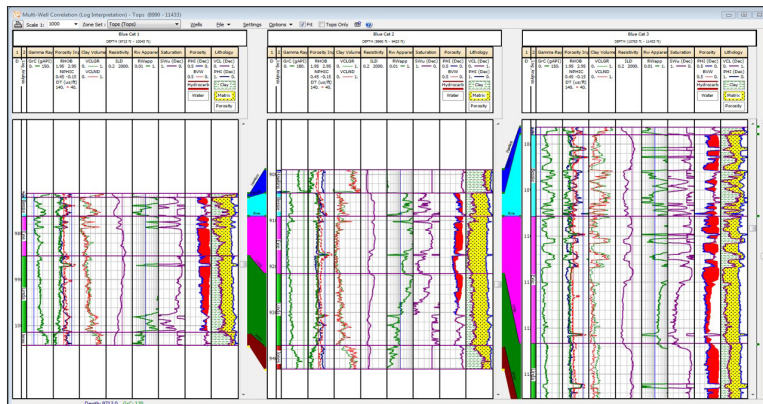
Kingdom Petrophysics is a streamlined and intuitive package that enables Kingdom users to quickly integrate rock, pore and fluid analysis with confidence. Kingdom Petrophysics has guided workflows for both conventional and unconventional plays as well as the flexibility to enable customized workflows.

Unlike competitive solutions that can leave users guessing at inputs or wasting time redoing complicated workflows, it intuitively delivers immediate results that are guided by interactive graphical parameter selection.

Petrophysics is the synergistic process of integrating multiple disciplines to characterize rock, pore, and fluid systems.



3D Petrophysics allows you to better visualize and distribute petrophysical parameters along your wells.



Petrophysical interpretations are interactively created and applied to multiples wells. You can visualize the results from multiple wells simultaneously.

Unconventional Analysis

Guided unconventional petrophysical analysis to assess:

- TOC volume
- Heavy mineral volume (mainly pyrite)
- Porosity
- Water saturation
- Clay volumes

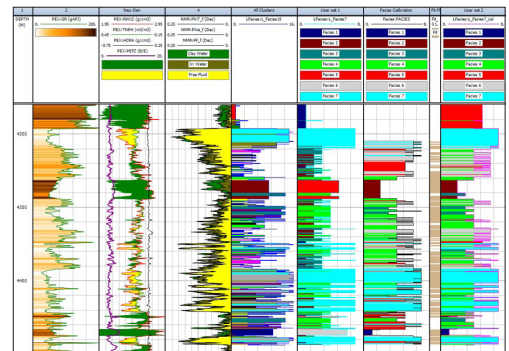
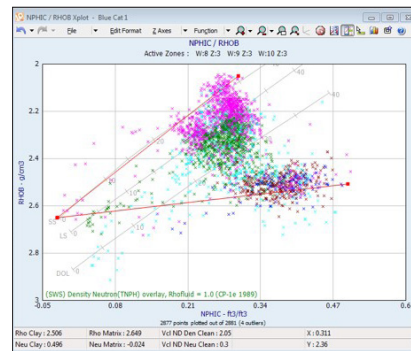
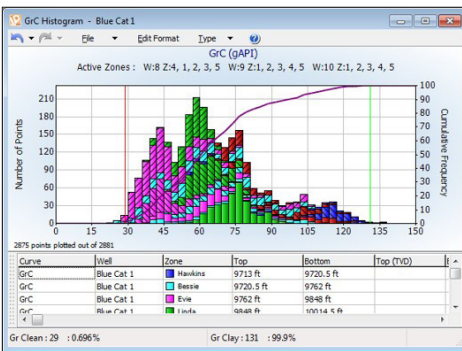
Quickly compare, average or optimize using over 20 methods for calculating TOC. Calibrate properties to core and assess best models for prediction for your geology.

Conventional Analysis

Guided conventional petrophysical analysis leveraging iterative optimization for petrophysical properties.

Productivity tools for:

- Standard plots - Pickett plots, Neutron Porosity, etc.
- Shaley sands
- Industry leading interactivity for
 - Quickly adding zones
 - Graphical calibration
 - Invasion correction
 - Facies and log prediction



Comprehensive Workflows, Optimized for Organic Shales

- TOC module
- TOC & Pyrite functionality added to Log Analysis
- Cutoff & Summation
- Multi-Zone functionality
- Multi-Well Log Plots
- TVD calculation & Horizontal Log Plots
- Environmental Corrections
- Interactive Depth Shift (stretch & squeeze), Log Splicing
- 3D Petrophysics
- Multi-Well Log Analysis
- Regional Parameters
- 3D Parameter viewer allows spatial trends to be identified
- Trend Parameter Curves
- The best way to QC data is to interpret it with respect to offset wells
- Observe regional trends in both raw data and interpreted results
- Cluster Analysis for Facies determination
- Calibrated to core, or not ('electro-facies')
- Multi-Linear Regression for Curve Prediction

For more information www.ihsmarkit.com



Confidence through
Collaboration IP™ a Lloyd's
Register Software Product

CUSTOMER CARE

NORTH AND SOUTH AMERICA

T +1 800 447 2273
+1 303 858 6187 (Outside US/Canada)

EUROPE, MIDDLE EAST AND AFRICA

T +44 1344 328 300

ASIA PACIFIC

T +604 291 3600

E CustomerCare@ihsmarkit.com

About IHS Markit

IHS Markit (Nasdaq: INFO) is a world leader in critical information, analytics and solutions for the major industries and markets that drive economies worldwide. The company delivers next-generation information, analytics and solutions to customers in business, finance and government, improving their operational efficiency and providing deep insights that lead to well-informed, confident decisions. IHS Markit has more than 50,000 key business and government customers, including 85 percent of the Fortune Global 500 and the world's leading financial institutions. Headquartered in London, IHS Markit is committed to sustainable, profitable growth.