



IHS Markit™

Maritime Portal

Powered by AISLive and Sea-web®

Maritime Portal – Overview

The Only Source You Need for Maritime
and Ship Tracking Intelligence

Maritime & Trade by IHS Markit is the leading source of maritime data and expertise. We are uniquely positioned to provide a platform which combines data from our two flagship online products: Sea-web and AISLive. By connecting Sea-web's comprehensive ship and ownership data with AISLive's terrestrial and satellite ship movement intelligence, Maritime Portal delivers a powerful market-leading solution.

Ships, movements, maritime intelligence and insight are integrated into one online solution. This enables deeper analysis of the global shipping fleet and answer's the industry's needs by utilising all of Maritime & Trade's capabilities.

The Maritime Portal provides you with:

- Integrated products and business intelligence
- Actionable maritime information and insight
- Global picture of the world fleet, the companies that manage them, the ports they call at, and their movements and trading history
- Designed to streamline your operational workflows
- Access to world leading forecasting tools
- Only source of maritime intelligence you need





Sea-web™

Combines extensive ships, owners, shipbuilders, ship movements, fixtures and casualty information integrated with Ports, Insight and News.

AISLive

Provides access to real-time ship movements through an online application. It displays the position of every AIS-equipped ship within the areas of shore-based coverage, and is updated every three minutes, 24/7. This award-winning service provides coverage of over 137,000+ live vessels every day.

We make the connection

Make



Smart business decisions using one source that connects the world's largest maritime databases with live ship positions providing unrivalled intelligence

Search



From over 200,000+ ships, 240,000+ companies and 15,500+ ports & terminals using simple or complex queries

Visualise



Live ship positions, port traffic, weather conditions and 5-day forecasts on multiple map layers with animated ship track

Filter



To quickly sort results to gain a highly granular view of specific areas of interest using extensive data filtering options

Benchmark



Fleet performance, operational analysis and competitor activities to understand trends over the past six months

Navigate



Seamlessly between areas of the portal - ships, movements, companies, ports, forecasting tools & maritime insight



s, you make the decisions



Understand

Market share & global shipbuilding activities for undertaking analysis for strategic business planning decisions



Monitor

World fleet & competitor activity, global trade flows, to understand trends, business threats and opportunities



Export

Data and run reports from search results, to use for identifying new business, market sizing, trading patterns and competitor analysis



Verify

Ship's identity & details, what companies own, manage & operate them, to seven levels of ownership



Assess

Current and historic ship and ownership intelligence, including Port State Control & Casualty data, for operational use, risk analysis & domain awareness



Receive

Email alerts advising of changes to a ship's itinerary for operational planning, & ships entering an area of interest for risk analysis

Subscription Plan Options



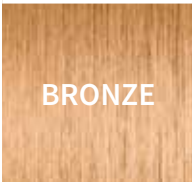
Market-leading maritime intelligence tool for identifying sales leads, undertaking market research and increasing operational efficiency.

Maritime & Trade's connected service provides subscription levels to suit every individual and organisation and provides customers with access to the most complete, reliable and accurate maritime information available – anywhere.

Options Available:

- Single and network plans
- Flexible options to meet your business needs
- Additional modules can be added

Packages:

| | |
|---|--|
|  A gold-colored rectangular box with a vertical wood-grain texture. The word "GOLD" is centered in white, uppercase letters. | Sea-web with Movements, Ports, AutoWatch, Casualty, Security, Insight* and Directory modules and AISLive Premium |
|  A silver-colored rectangular box with a vertical wood-grain texture. The word "SILVER" is centered in white, uppercase letters. | Sea-web with Movements, Ports and AutoWatch modules and AISLive Standard |
|  A bronze-colored rectangular box with a vertical wood-grain texture. The word "BRONZE" is centered in white, uppercase letters. | Sea-web and AISLive Standard |

| MARITIME GOLD | MARITIME SILVER | MARITIME BRONZE |
|---------------|-----------------|-----------------|
|---------------|-----------------|-----------------|

Sea-web

Ships, Owners & Builders

✓

✓

✓

Ports

✓

✓

+

Movements

✓

✓

+

WatchLists Alerts

✓

✓

✓

Insight - Maritime industry analysis

✓

+

+

Directory - Maritime company database

✓

+

+

Security - Port security & risk information

✓

+

+

Casualties - ship casualty incidents data

✓

+

+

Fixtures - Dry and wet charter markets

✓

+

+

AISLive

Satellite AIS Data

✓

+

+

Terrestrial AIS Data

✓

✓

✓

Ports

✓

✓

+

Historic ship track: 2005-date

✓

+

+

Historic ship track: Last 60 days

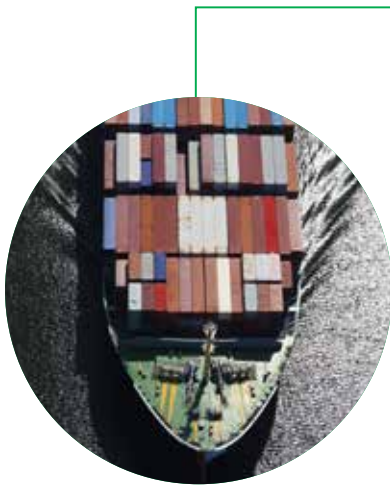
✓

✓

✓

Only IHS Markit can provide...

IHS Markit connects the world's largest maritime database with the market-leading AIS intelligence for easy & instant insight into the global fleet



Ships

Identify every propelled sea-going merchant ship of 100 GT and above

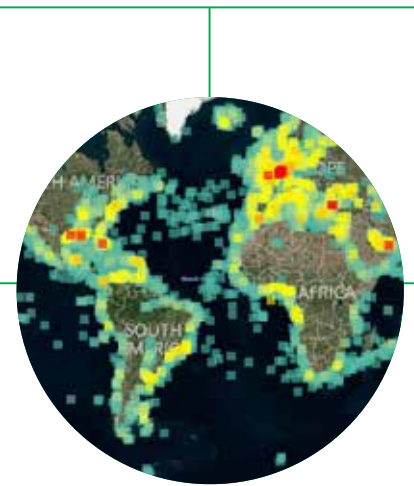
- IHS Markit is the sole originating source for assigning IMO Ship and Company numbers
- Unrivalled accuracy and depth of coverage for vessel characteristics and the global newbuilding book
- 220,000+ ships, including ships in service, broken up, under construction, newbuilding
- Port State Control, ISM
- 500,000 images
- Dynamic links to comprehensive ship characteristics or port details



Companies

240,000 ship owners, operators and managers

- Seven levels of ship ownership from group beneficial owner
- Country of domicile and true nationality
 - Unique IMO Company number
 - 64,000 maritime-related companies
 - Shipbrokers, marine & safety equipment suppliers, class societies, shipyards, engine builders, repairers & dry docks
 - Company profiles
 - Personnel, products



AIS Movements

Track live ship positions with unrivalled global coverage

- Tracking between 135-140K vessels daily
- Over 500M messages collected yearly
- Over 11.5M port callings yearly
- Port/zone estimated arrival times
- Ten year archive of movement history
- Only IHS Markit operates the world's largest network of land-based receivers, supplemented with satellite surveillance of mid-ocean positions
- Unrivalled global coverage of live ship positions & detailed cargo movements



Ports

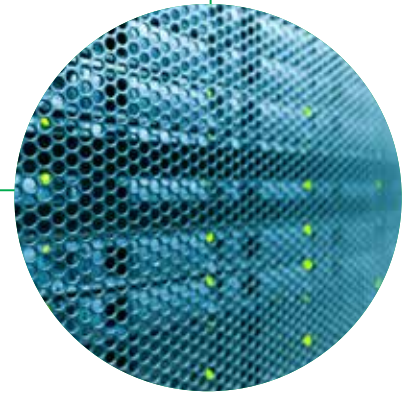
Plan a port call with ease

- Geo-referencing of over 22,500+ berths in over 300 world ports
- Details on more than 15,500 ports & terminals
- Over 26,600 port service providers
- 4,000 port plans
- Data can be integrated into bridge navigation and planning software
- Latest details of LNG bunker and Cold Ironing facilities



IMO

Only IHS Markit is the sole originating source for assigning IMO Ship and Company numbers, guaranteeing an unmatched accuracy and depth of coverage for vessel characteristics and the global newbuilding orderbook



Forecasting

Only IHS Markit has world-leading forecast tools based on combination of breadth and depth of data, expertise and advanced modelling capabilities, providing state-of-the-art forecasts on world trade and fleet capacity

...Others can only aspire

An aerial photograph of a busy shipping lane, likely a major waterway, showing several large cargo ships (tankers) sailing in various directions. The water is a deep blue-green color, and the sky is a lighter blue. The ships are scattered across the frame, with one large ship in the foreground and several others further out. The overall scene conveys a sense of global maritime trade and activity.

About Maritime & Trade Solutions

Technology, regulation, market risk and geopolitical threats have made the world's oceans challenging to navigate both profitably and safely. Accurate and timely intelligence enables the market to understand global trade flows to make confident business critical decisions and maximize ROI.

Maritime & Trade is the trusted source of maritime and data, research, analytics and consulting services, with a global customer base of over 8,000 commercial and public sector organisations. Our capabilities and expertise enable our customers to manage complex global supply chains profitably, efficiently and safely.



Maritime & Trade's core capabilities include:

- The world's most comprehensive database of vessels, 100 GT and over
- The world's largest network of land-based and satellite AIS receivers providing real-time coverage of live vessel positions
- The largest database of bilateral trade statistics covering 86 countries and over 90% of total global trade
- PIERS database of US seaborne imports and exports at highly-granular bill of lading level of detail
- Industry-leading conferences around the world including TPM, attended by over 2,000 delegates annually

The combination of these capabilities, in addition to data modelling, macroeconomic and industry expertise across IHS Markit, enables Maritime & Trade to provide unique analysis and forecasts addressing strategic issues for our customers. These include detailed forecasts of global trade by commodity and transportation mode, shipping fleet capacity and freight rate forecasts, and the creation of bespoke market studies for clients in support of specific industries, regulatory or investment requirements.

Our Maritime & Trade solutions empower customers to make better decisions through the use of superior intelligence and uniquely complementary data sources across the entire value chain (Bill of Lading, Ship Intelligence, Ship Movement, and Trade Intelligence).

About IHS Markit

IHS Markit (Nasdaq: INFO) is a world leader in critical information, analytics and solutions for the major industries and markets that drive economies worldwide. The company delivers next-generation information, analytics and solutions to customers in business, finance and government, improving their operational efficiency and providing deep insights that lead to well-informed, confident decisions. IHS Markit has more than 50,000 key business and government customers, including 85 percent of the Fortune Global 500 and the world's leading financial institutions. Headquartered in London, IHS Markit is committed to sustainable, profitable growth.

CUSTOMER CARE AMERICAS

T +1 800 447 2273

+1 303 858 6187 (Outside US/Canada)

CUSTOMER CARE EUROPE, MIDDLE EAST, AFRICA

T +44 1344 328 300

CUSTOMER CARE ASIA PACIFIC

T +604 291 3600

E CustomerCare@ihsmarkit.com