



IHS Markit™

Petra Sidekick

Integrated Software and Delivery Tools
to Advance your E&P Workflow

Petra

Petra Sidekick is a new external tool that provides you with a rapid and intuitive way to access your Petra project, allowing you to analyze project data in a multi-well view, import and export data into a Petra project, and perform various database maintenance functions.

Sidekick Well View: Multi-well or Single-well view

Petra Sidekick allows you to view your data in a unique multi-well view. You can view your data in a single well view depending on your interpretation style preference. The Well Viewer provides a well summary with selectable views and data items for analysis.

Show Well Statistics by Scanning Wells

Load additional project well statistics, including total wells in project, currently selected wells, deviated wells, number of counties containing wells, etc.

Data supported by Sidekick

Sidekick allows you to view the following types of project and well data, as well as allows for rapid assessment of the data in your Petra project, with the end result of streamlining maintenance functionality.

- **Project** data shows a brief summary of the selected project
- **Well** data shows well counts and statistics for a selected well list; scanning wells provides additional well statistics
- **Zone** data is an expandable list of the zones available within the project; selecting a zone provides zone specifics and populates the well list accordingly
- **Tops** data is listed within the project as well as the tops with available associated tops
- **Raster** data lists all rasters within the project and all wells associated with a selected raster
- **Grid** data shows a table of content type view for existing grid files within the selected well list (also shows additional statistics of grids)
- **List** data lists existing overlays files within the project; opening an overlay allows for additional maintenance functionality associated with the layers associated with a selected overlay file
- **Table** data displays data associated with each data table; pack percentage allows for a unique view of the condition of the data associated with each table; a decreasing pack percentage number indicates fragmented data, allowing you to pinpoint data fragmentation perform database repairs specific to one table

Table Name	Record Count	File Size	Pack %
UNITS	14,811	3,388,335	92.67
BPLLOC	3,133	321,875	97.34
CAGING	29,501	5,967,009	99.87
CEMENT	1	7,202	NA
CORES	2,104	340,439	NA
DATECHSD	107,052	7,609,267	99.89
DEBR	0	14,719	NA
DISCURRY	0	8,575	NA
DISCURVOP	2	6,563	NA
DISCURVOTA	2,060	407,899	NA
FGAPS	6	11,377	NA
FMSVM	0	10,879	NA
FMTEST	2,438	657,949	NA
INTTOP	5	5,276	NA
INTTOP2	21	12,565	NA
INTDATA	34	18,467	NA
INTAUX	170	26,255	NA
LOCPDS	9	4,228	NA

Grid and Table Data

Maintenance

Sidekick provides the following maintenance tools for your Petra project:

- **Global data delete** — Globally deletes selected items from current well list
- **Zone Maintenance** — Adds, modifies, or deletes zone and zone data items
- **Production Maintenance** — Adds, modifies, or deletes monthly production database variables
- **Raster Log Maintenance** — Controls image group names, establishes raster group aliases, and performs other raster group maintenance tasks
- **Digital Log Maintenance** — Creates, deletes, and renames log definitions; this tool can also change the default log scales and lock/unlock a curve for the entire database

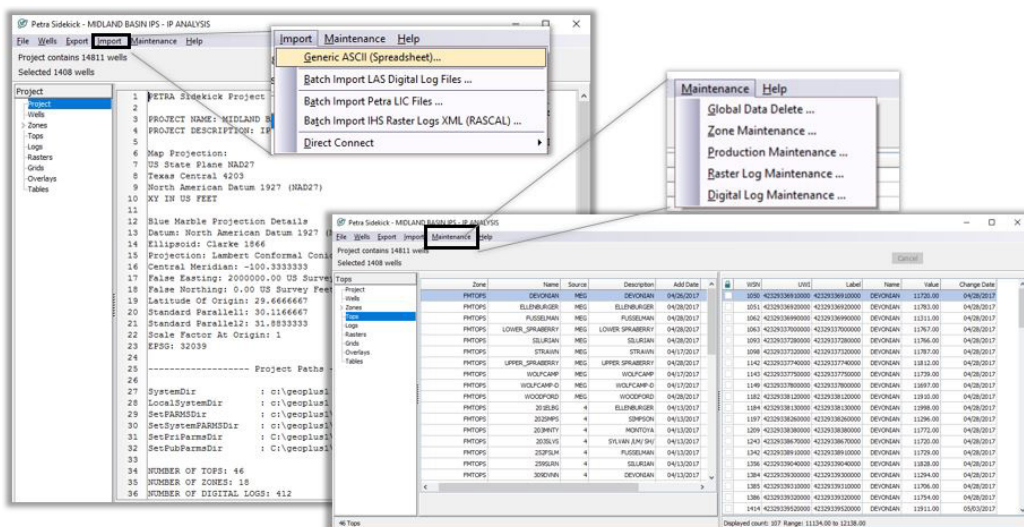
Importing and Exporting

Importing

- The Generic ASCII importer imports an ASCII file data based on defined field definitions from a previously existing file
- Batch importing LAS digital log files allows for the loading of multiple LAS files in a single batch
- Batch importing Petra LIC files assigns multiple raster log images to wells by reading LIC of IHS Markit XML files
- Batch importing IHS Markit raster logs LIC files XML (RASCAL) assigns multiple raster log images to wells by reading RASCAL files
- Digital logs and raster logs can be imported directly through IHS Markit Direct Connect

Exporting

- Exporting data through a tabular ASCII file allows the user to define selected data to export from a Petra project



Maintenance and Importing Functionality

For more information
IHS.com/geoscience

About IHS Markit

IHS Markit (Nasdaq: INFO) is a world leader in critical information, analytics and solutions for the major industries and markets that drive economies worldwide. The company delivers next-generation information, analytics and solutions to customers in business, finance and government, improving their operational efficiency and providing deep insights that lead to well-informed, confident decisions. IHS Markit has more than 50,000 key business and government customers, including 85 percent of the Fortune Global 500 and the world's leading financial institutions. Headquartered in London, IHS Markit is committed to sustainable, profitable growth.

CUSTOMER CARE AMERICAS

T +1 800 447 2273
+1 303 858 6187 (Outside US/Canada)

CUSTOMER CARE EUROPE, MIDDLE EAST, AFRICA

T +44 1344 328 300

CUSTOMER CARE ASIA PACIFIC

T +604 291 3600

E CustomerCare@ihsmarkit.com