



Pricing Data: Securitized Products

Independent bond pricing and data across US securitized products

The changing regulatory and accounting environment, along with the intense focus on transparency, have increased demand for high quality independent pricing data for use within price verification, price discovery, valuations and risk management processes.

IHS Markit offers customers securitized products pricing data, sector level time series reports, and transparency metrics across Agency Pass Through, Agency CMO, Agency CMBS, Reverse Mortgages, Non-Agency RMBS, Consumer ABS, European ABS, CMBS, TruPS, ABS CDO, CRE CDO, and CLO asset classes.

We provide same day clean prices as a percentage of par for all asset classes, including assumptions, liquidity scores, and dates of observed recent market color. We offer independent evaluated prices that are reviewed on a daily basis using our proprietary bond pricing system. Prices and assumptions are calculated assuming round-lot levels for all asset types.

We combine innovative technology and a robust pricing methodology to collect, process and deliver high quality pricing data. Our securitized finance pricing service provides you with unrivalled visibility on market pricing levels on a daily basis. This enables you to optimize your ability to verify prices accurately and ensure alignment with the market.

Pricing and data models utilize the industry standard providers of cashflows, trading, and reference data. Our systems and models are connected to Intex, Trepp, eMBS, Andrew Davidson, Loan Pricing from IHS Markit, SIFMA TRACE, Tullett Prebon and others.

MBS	CLO/CDO	Consumer ABS	Global ABS
Residential	Debt	Student Loans	European
Commercial	Equity	Autos	Asian
Agency	TruPS	Marketplace	Canadian
Non Agency	ABS	Whole Business	Australian

KEY STATS

1.34M+
Securities Priced

11
Currencies

14
Unique Asset Classes

24/5
Global Customer Support

Observable pricing data

Evaluators maintain access to several observable pricing sources, such as Markit Parsing and SIFMA TRACE feeds. Markit Parsing data includes dealer-to-client runs, bids wanted in competition information and trade color. Through Markit Parsing we observe over 1.1 million daily quotes that are processed in real-time from 300+ buy and sell side participants.

Sophisticated methodology

We utilize a sophisticated categorization methodology to group securities with similar collateral and structural characteristics into multiple cohorts. In addition, our best-in-class models and data from Intex are employed to mirror the standards set by buy-side and sell-side firms.

System Flexibility

Our enhanced system flexibility allows evaluators to rapidly adapt to changing market conditions while adhering to established pricing convention.

Transparency

For each bond, we provide detailed information about key pricing assumptions used in the evaluation process to ensure full transparency in price generation.

Distribution

We offer direct multiple data delivery channels, including SFTP, E-mail, our Portfolio Valuations service, a web based Price Viewer and Markit Desktop.

Dedicated support

We offer immediate accessibility and support from the evaluation team, who are available 24/5 to assist in the explanation of Markit's pricing methodology and inputs used, with a fully documented price challenge process. The team is committed to providing a timely explanation to challenges, a crucial need for same day pricing.

US Mortgage Backed Securities

(RMBS and CMBS)

US mortgage related product issuance grossed nearly \$2 trillion in 2016, making it the second largest US debt sector by issuance after Treasuries. We offer independent and transparent pricing data on over 1.3 million securities of US Agency MBS, along with data, sector-level time series reports and transparency metrics on all securities covered.

Our RMBS coverage universe is comprised of multiple unique asset classes under the RMBS umbrella. Within the Agency (GSE) space, we cover all offerings from Fannie Mae, Freddie Mac and Ginnie Mae. This includes TBAs, Pass-Throughs (Spec Pools), CMOs, CMBS, Reverse Mortgages (HECM), Multifamily and SBA securities. Our Agency Pass-Through and TBA pricing includes the calculation of pre-factor pricing and future settlement TBA coverage.

Non-Agency RMBS coverage includes legacy collateral types, such as Subprime, Alt-A, and Prime mortgages. Additionally, we have full coverage on newly issued asset classes that have come to market over the past few years, such as Prime 2.0, Credit Risk Transfer (CRT) and Non/Re-performing collateral.

COVERAGE

1.3 million
Securities

6
Core asset types

European Mortgage and Asset Backed Securities

(MBS and ABS)

Pricing Data from IHS Markit provides an independent and transparent source of daily pricing data for European securitized products, including consumer ABS, RMBS and CMBS.

Our European ABS pricing data combines contributed and evaluated pricing.

Our European ABS pricing service is supported by over 15 global sell-side desks active in ABS sales and trading, promoting market liquidity and pricing transparency.

The service allows clients to track the value of proprietary ABS portfolios through a secure website or via direct feeds to client internal systems. Our European ABS service offers a complementary methodology to price bonds where contributed data points/quotes are not readily observed.

We employ best in class analytical and data systems to provide independent prices.

COVERAGE

10,000+

bonds

Consumer Asset-Backed Securities

(CABS)

Consumer ABS issuance in 2016 totaled \$175 billion.

The market continues to grow with the expansion of marketplace lending ABS, whole business securitization, and other asset classes, while sustained issuance in traditional ABS sectors continues to drive liquidity and stability. We offer independent and transparent pricing for more than 5,000 tranches of US and Canadian consumer ABS, including credit cards, auto loans, student loans, and marketplace lending. Our evaluated pricing platform blends transparent methodology with established valuation expertise to deliver robust solutions for consumer ABS pricing. Our pricing models are fueled by observable market data from Markit Parsing, SIFMA TRACE and Intex-cashflows.

COVERAGE

5,000+

bonds

12

product types

Collateralised Loan and Debt Obligations

(CLO and CDO)

The evaluation of CLO and CDO securities requires the ability to accurately price and cover the value of the underlying securities that comprise each deal. We leverage the robust coverage of our loan and bond pricing products to facilitate NAV calculations, tally industry concentrations and evaluate the value of each bond.

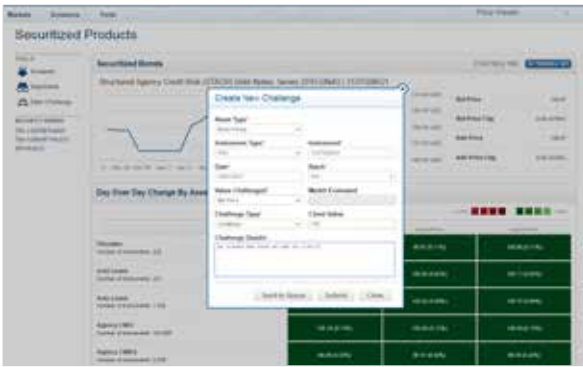
Issuance in the CLO market has totaled over \$350 billion from 2014 to 2016, while CDO and Trust Preferred (TruPS) markets reached their peak in 2007, with over 1.4 trillion in deals issued by that time. Our coverage includes all legacy and newly issued US and European securities, where we leverage our cashflow and data models to price the full deal including intricate equity and combination tranches.

The changing regulatory requirements call for more rigorous accounting obligations and an ongoing focus on price transparency. Our pricing file includes our pricing data and the full assumption set used for each security, liquidity metrics, and reference data.

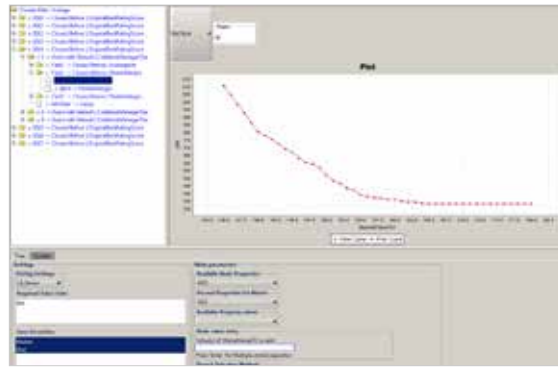
COVERAGE

10,000+

bonds



Submit challenges through an easy-to-use interface.



Our proprietary pricing system is able to plot categories and spread curves for each security universe.



Our intuitive interface gives a snapshot of a wide variety of relevant data, including liquidity scores and pricing history.

Short	Series	Class	Price Bid	Price Ask	Spread Bid	Spread Ask	Spread Benchmark	Size	Currency	Mkt	Coupon
ABX	2005-01	MS	90.25								
BS06	2006-02	AT	90.75								
CAU1	2005-04	MD	88								
CDL	2005-05	VF	88.875								
CDL	2006-11	TA	88.25								
FRA	2004-12	VF	88.75								
H04T	2002-1	AT	90								
H04T	2004-1	VF	83.75								
HS0C	2006-03	MD	82.75								

Series	Class	CFace	CFace	CFace	CFace	CFace	CFace
MS05	2004-01	MS	100.00	100.00	100.00	100.00	100.00
MS06	2005-01	MS	100.00	100.00	100.00	100.00	
MS07	2006-01	MS	100.00	100.00	100.00	100.00	
MS08	2007-01	MS	100.00	100.00	100.00	100.00	
MS09	2008-01	MS	100.00	100.00	100.00	100.00	
MS10	2009-01	MS	100.00	100.00	100.00	100.00	
MS11	2010-01	MS	100.00	100.00	100.00	100.00	
MS12	2011-01	MS	100.00	100.00	100.00	100.00	
MS13	2012-01	MS	100.00	100.00	100.00	100.00	
MS14	2013-01	MS	100.00	100.00	100.00	100.00	
MS15	2014-01	MS	100.00	100.00	100.00	100.00	
MS16	2015-01	MS	100.00	100.00	100.00	100.00	
MS17	2016-01	MS	100.00	100.00	100.00	100.00	
MS18	2017-01	MS	100.00	100.00	100.00	100.00	
MS19	2018-01	MS	100.00	100.00	100.00	100.00	
MS20	2019-01	MS	100.00	100.00	100.00	100.00	
MS21	2020-01	MS	100.00	100.00	100.00	100.00	
MS22	2021-01	MS	100.00	100.00	100.00	100.00	
MS23	2022-01	MS	100.00	100.00	100.00	100.00	
MS24	2023-01	MS	100.00	100.00	100.00	100.00	
MS25	2024-01	MS	100.00	100.00	100.00	100.00	
MS26	2025-01	MS	100.00	100.00	100.00	100.00	
MS27	2026-01	MS	100.00	100.00	100.00	100.00	
MS28	2027-01	MS	100.00	100.00	100.00	100.00	
MS29	2028-01	MS	100.00	100.00	100.00	100.00	
MS30	2029-01	MS	100.00	100.00	100.00	100.00	
MS31	2030-01	MS	100.00	100.00	100.00	100.00	

Our analysts utilize a broad variety of information available through Markit Parsing.

More information on IHS Markit products and services

London +44 20 7260 2000
New York +1 212 931 4900
Amsterdam +31 20 50 25 800
Boulder +1 303 417 9999

Dallas +1 972 560 4420
Frankfurt +49 69 299 868 100
Hong Kong +852 3726 7000
Tokyo +81 3 6402 0130

Toronto +1 416 777 4485
Singapore +65 6922 4200
Sydney +61 2 8076 1100

sales@ihsmarkit.com